

北京双鹤药业股份有限公司

2008 年度社会责任报告

1

2

3

1

2

1

2

2008

2008

()

1939

97

50

15

8

50

1997 1999
2001 9 1998
2002
2002 36 1.68
20 6
4.68
30 2000
2003

2004

41.95

2004

2005 2010

2005

2007

2002

2006

2007

“

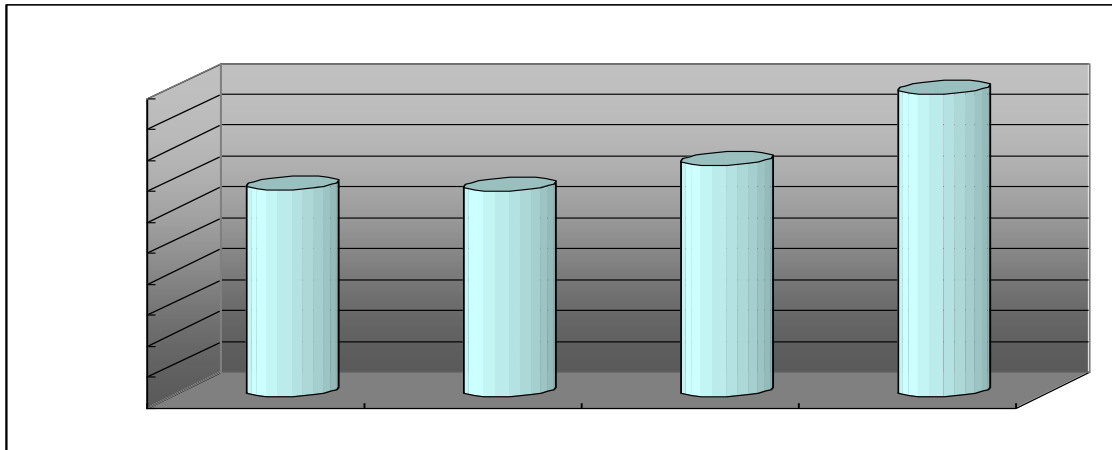
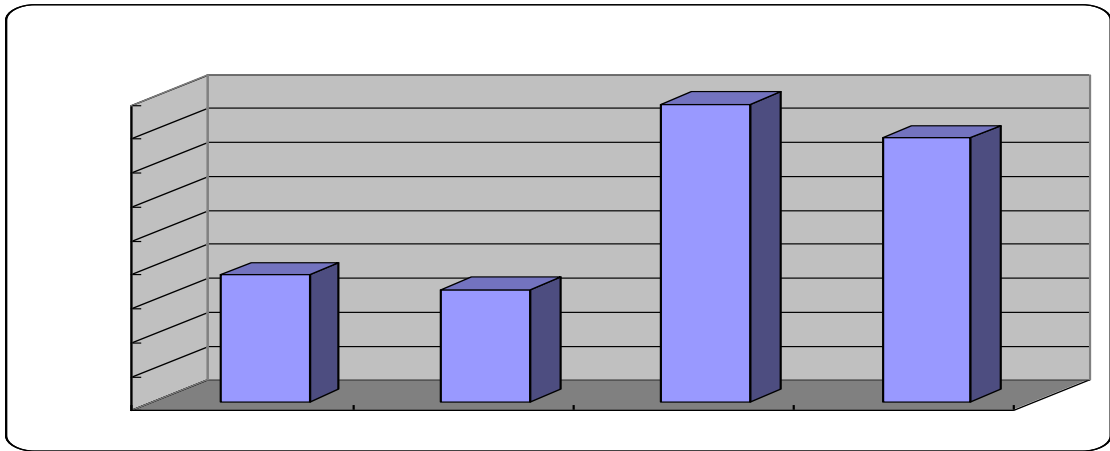
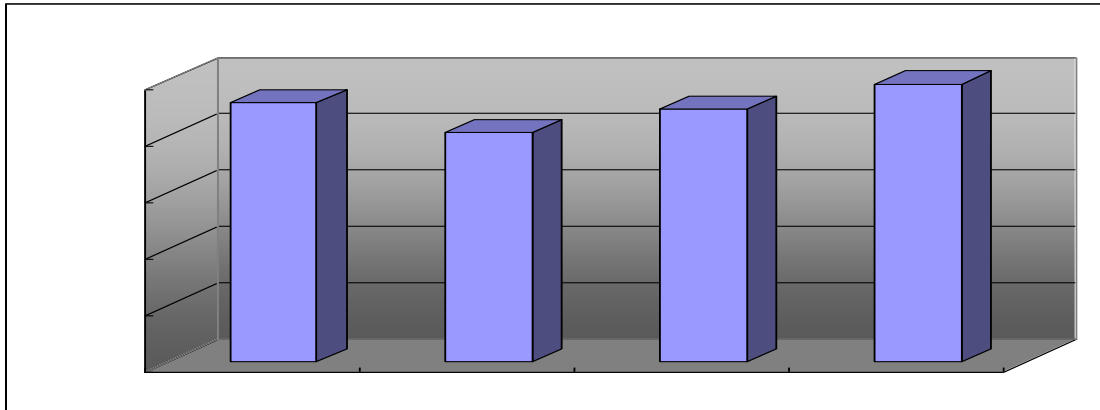
”

2005 2006 2007

1.87

1.65

4			2007
	2005	2007	
13.53%			11.21%
25.91%	2005-2007		
2008			
1			
2008		490,733.60	9%
	47,065		
32%		12%	26%
9			



2

1997

2007

2008

(1)

2008

()

()

()

()

()

(2)

08

()

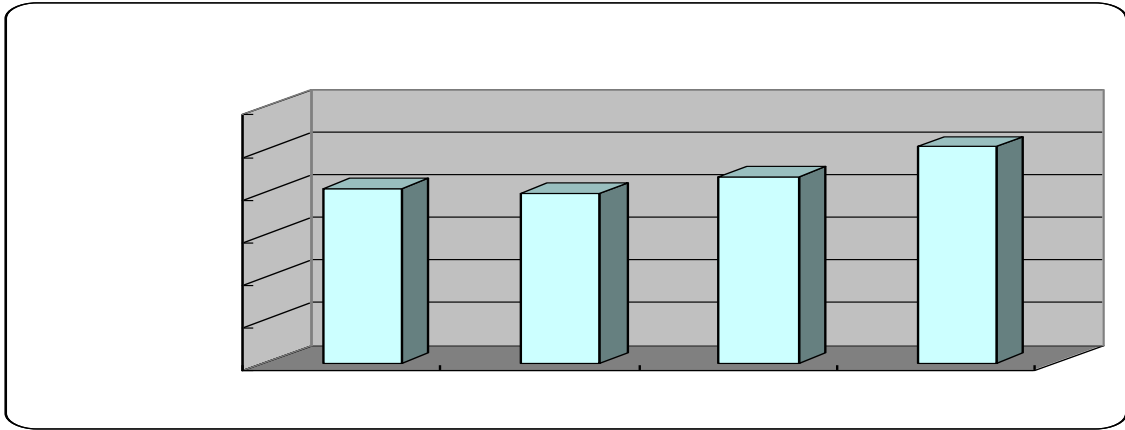
3

2008

2008

253,756

16.3%

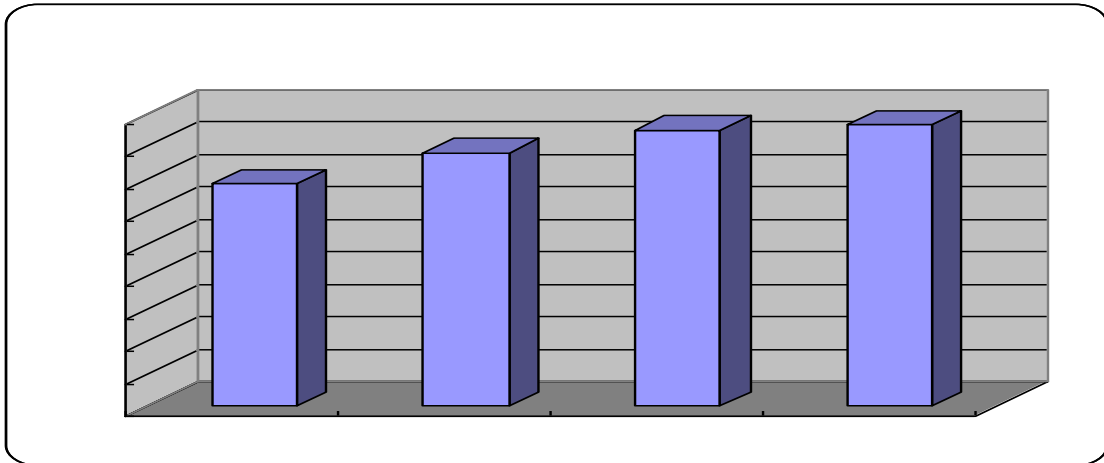


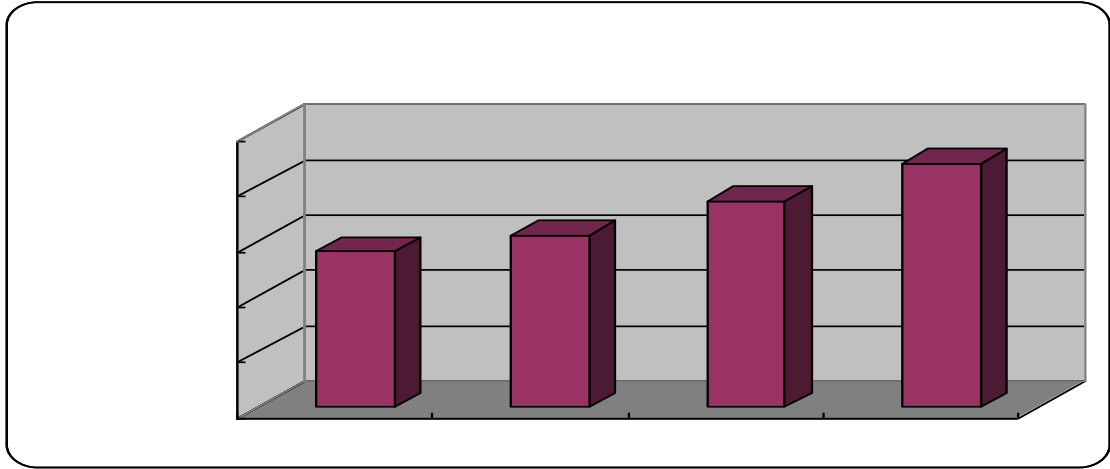
206,988

18%

82%

1.5





(1)

2008

2008

2

1

16

50%

08

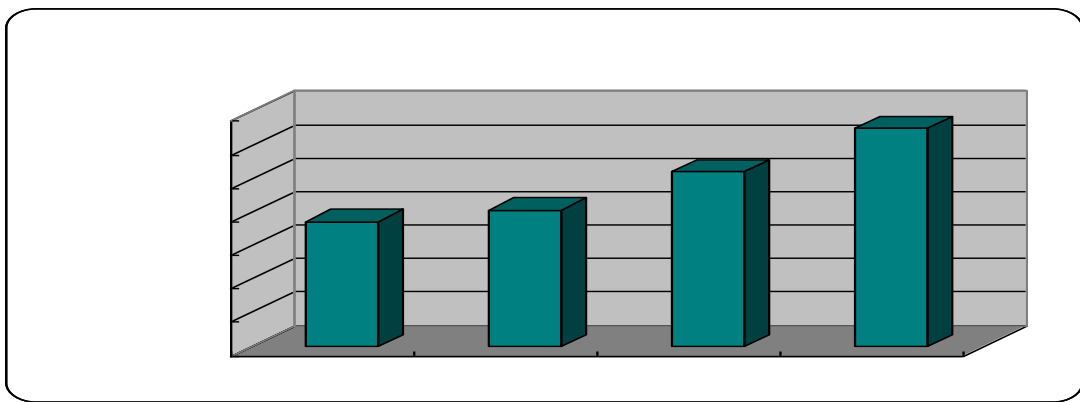
5

2

2008

130,510

24.67%



(2)

2008

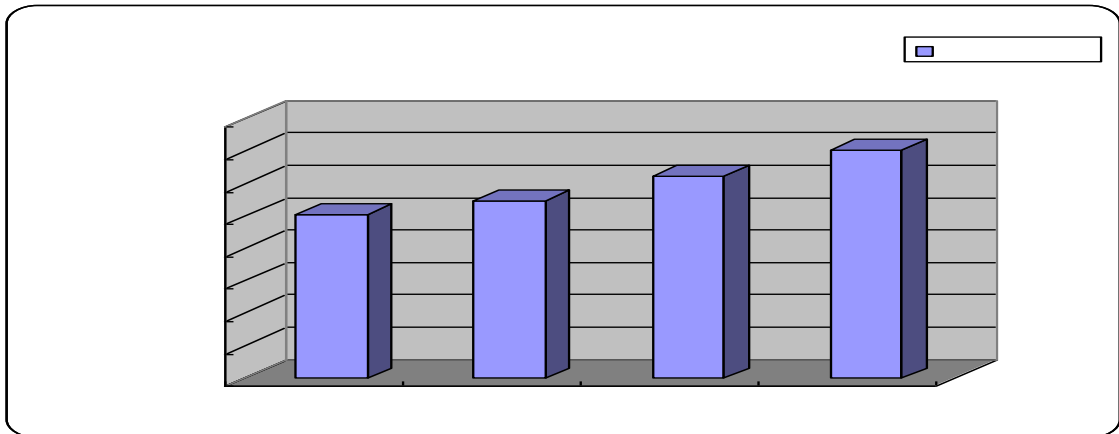
0

“ ”

2008

70,369

12.88%



(3)

2008

CGMP/ANDA

FDA

CGMP

FDA

CGMP

6%

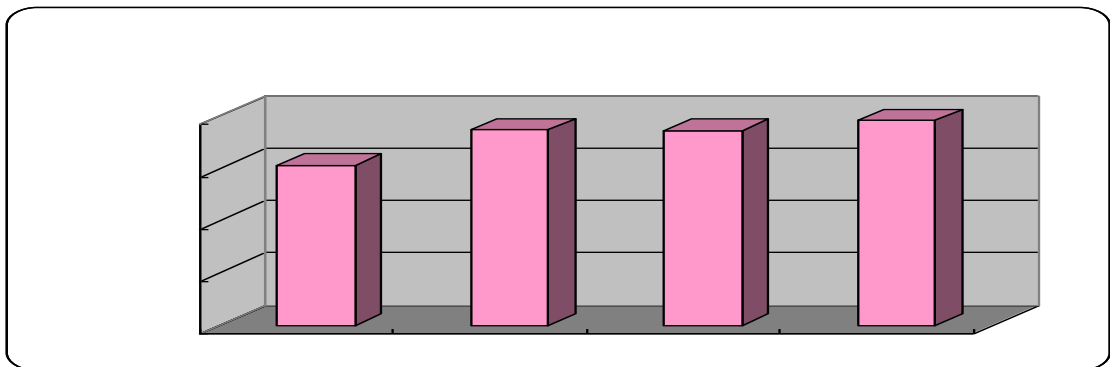
OTC

70

2008

19,556

5.15%



5

1997

1997-2008 4
14,700 47,641.329
3.7
2005 1 4.19
2008 12 31 24.09 475%
18.48 114.77
(
) 2008 11 30
2008

2007 A

2008

AAA

1

●

● 6

● 7 “ ”

●

● 11 119

-

-

-

2008

-

9

-

“ ”

“ ”

“

”

-

2

(1)

,

(2)

(3)

“

”

“

”

(4)

6

“ - - ”

(5) QA()

CGMP

SOP

SMP

QA

(6)

(7)2008

2008

2008

GMP

08

GMP

6

2008

2007

1

2008

(1)

2007

, 2008 7 1

,
20

7

9 10 6

SO₂

20 SO₂ 100
50 50 30
(2)

()

2007 11
60
2008

,

2

“ ”

(1)

“ ” 2010 “
” 0.45

(2)

-
-
-
-
-

2008

(1)

2006 , 150 , 81 ,2007 70 .2007
,5 1 , 300
, 6

2008 5 1

8

600

18

(2)

30 ,
5 5 , ,

60

(3)

(1100M³ 400M³)

6

, 2009

“

”

- 2008 430 1,524
1,954
-

“ ”
10% 2008
591 18,713
560

- 2008

- 2008
45.8% 54.2%



,

			2004	2008
		1000		
●1939			“	”
●1960	4	1	287	
		32		
●1976	7	28		
		12		1.68
2.7				
●1998			50	
				51
17				
●2003				
		24		

24

“ ”

“ ”

30

●

'97

●2008

1000

70

2008

2008

(21

1

1)

2009

”

2009 4 24

1

2

1

1 2006 7

●

2004 2005

●

“ ”

(

)

●

(

)

●

0

● 2005 2007

2007

2 2006 8

-
-
-
-
-
-

3 2006 10

-
-
-

4 2007 3

-
-
-

5 2007 4

-

●

●

●

●

●

●

6 2007 8

●

●

●

●

7 2008 4 07 08

●

●

●

●

8 2008 10

●

●

●

●

2

1999

-
-
-

2000

-
-
-
- “ ”

2001

-
-
- “ ”
- “ ”
- 2000-2001
- “ ()” “ ”

2002

- 500
- 180
-

●		
●		
●		
●	“A”	
2003		
●		100
●		
2004		
●	100	
2005		
●		
●		
●	.	
●		
●		
2006		
●		
●		
●		
●	—	
2007		
●		

-

-

“

”

2008

-

AAA

-

100

-

2007

A

-

-

-

-

-

100

-

A

(2009 2010)

-

2008