

**北京双鹤药业股份有限公司**  
**600062**

**2007 年年度报告**

.....	3
.....	3
.....	4
.....	6
.....	10
.....	14
.....	20
.....	20
.....	27
.....	28
.....	34
.....	105

1

2

3

4

( )

1

BEIJING DOUBLE-CRANE PHARMACEUTICAL CO. LTD.  
DCPC

2

3

(010)64742227-681

(010)64399089

E-mail dawsonz@dcpc.com

1

(010)64742227-653

(010)64398086

E-mail mss@dcpc.com

1

4

1

1

100102

<http://www.dcpc.com.cn>

[mss@dcpc.com](mailto:mss@dcpc.com)

5

<http://www.sse.com.cn>

6

A

A

A

600062

7

1997 5 16

2002 12 3

1

1100001510319

110105633796475

22

( )

---

	393,764,912.87
	574,684,384.48
	437,580,763.41
	276,485,571.79
	235,458,162.37

( )

	165,293,951.17
	7,992,076.72
	-4,564.05
	15,203,750.63
	-27,000,000.00
	-390,022.85
	161,095,191.62

( )

	2007	2006		(%)	2005	
	4,556,616,381.12	4,133,346,054.01	4,116,608,824.21	10.24	4,659,585,279.08	4,647,858,656.92
	574,684,384.48	243,286,052.33	253,058,276.13	136.22	241,852,253.78	240,676,453.57
	437,580,763.41	164,742,346.24	164,893,391.43	165.62	191,135,447.13	186,639,285.38
	276,485,571.79	137,328,520.10	137,479,565.29	101.33	105,253,982.10	100,757,820.35
	235,458,162.37	303,623,064.41	303,623,064.41	-22.45	139,775,069.67	139,775,069.67
	2007	2006		(%)	2005	
	3,673,463,375.38	3,281,450,804.56	3,259,319,827.12	11.95	3,832,177,712.88	3,813,293,724.98
( )	2,197,472,998.62	1,829,802,388.43	1,815,543,541.04	20.09	1,742,210,300.74	1,727,869,655.79
	2007	2006		(%)	2005	
	0.9921	0.3735	0.3738	165.62	0.4333	0.4231
	0.9921	0.3735	0.3738	165.62	0.4333	0.4231
	0.6268	0.3113	0.3117	101.35	0.2386	0.2284
(%)	19.91	9.00	9.08	10.91	11.03	10.80
(%)	21.73	9.19	9.26	12.54	11.69	11.43
(%)	12.58	7.51	7.57	5.07	6.07	5.83
(%)	13.73	7.66	7.72	6.07	6.44	6.17
	0.5338	0.6884	0.6884	-22.46	0.3169	0.3169
	2007	2006		(%)	2005	
	4.9821	4.1485	4.1162	20.09	3.9499	3.9174

( )  
1

2 ( : )

	192,850,367	—	—	192,850,367		2011 4 6
	1,360,949	—	—	346,949		2007 4 6
	1,521,000	—	—	2,535,000	(1)  (2)	2007 4 6
					354,473	

1

(2006)

2694

101.4

2

23.6315

A

(2006)

2694-2

229.8685

58.3264

3

3

(1)

(2)

(3)

( )  
1

:

						16,281
		(%)				
		48.89	215,653,887	—	192,850,367	
		1.36	6,002,232	6,002,232	—	
		1.27	5,599,724	5,599,724	—	
		1.24	5,451,784	5,451,784	—	
		1.07	4,704,882	4,704,882	—	
		0.91	4,000,000	4,000,000	—	
2		0.73	3,218,300	1,290,730	—	
		0.72	3,167,240	3,167,240-	—	
		0.71	3,114,058	3,114,058-	—	
		0.62	2,725,644	2,725,644	—	
						22,803,520
						6,002,232
						5,599,724
						5,451,784
						4,704,882
						4,000,000
2						3,218,300
						3,167,240
						3,114,058
						2,725,644
						9
						2-10

:

1		192,850,367	2011 4 6	—	
2		346,949	2007 4 6	—	
3		2,535,000	2007 4 6	—	(1)  (2)  354,473

2  
(1)

2,320,000,000  
1987 3 28

( )

(2)

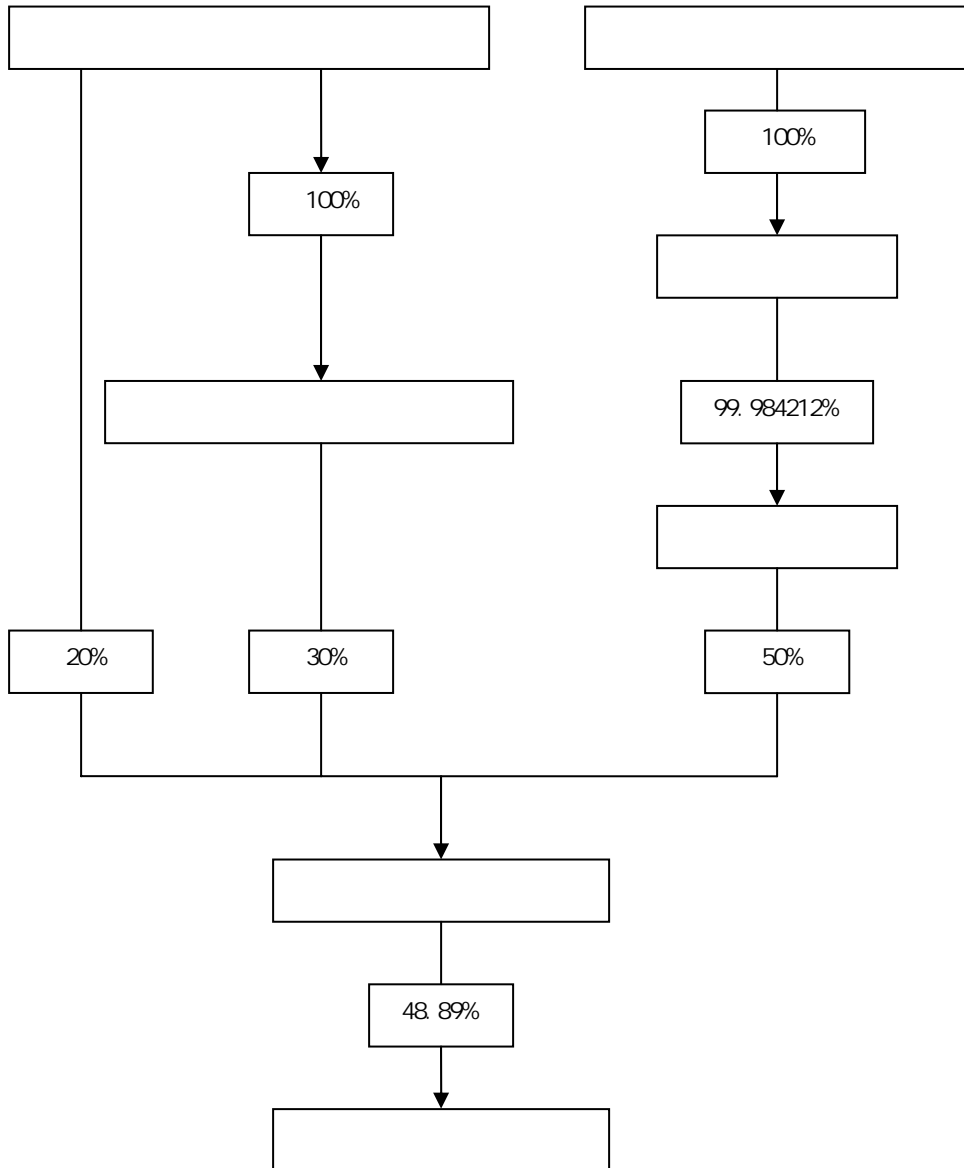
( )20% 30% 50%



2006 12 19 ( ) ( )  
)  
50  
12 25 ( 2006 [2006]1549  
) 50% 2007 1 12  
[2007]5

2007 1 20 50%  
215,653,887 ( 48.89%) 50%

(3)



( )

:

													(				
													)				
			48	2006 5 30	2009 5 30	—	—	—	—	—		—	—	—	—		
			47	2006 5 30	2009 5 30	—	—	—	—	—		—	—	—	—		
			59	2006 5 30	2009 5 30	—	—	—	—	—		—	—	—	—		
			50	2006 5 30	2009 5 30	—	—	—	—	—		101.17	—	—	—	—	
			44	2006 5 30	2009 5 30	—	—	—	—	—		—	—	—	—		
			50	2006 5 30	2009 5 30	26,100	26,100	—	—	—		75.89	—	—	—	—	
			49	2006 5 30	2009 5 30	21,300	21,300	—	—	—		70.26	—	—	—	—	
			64	2006 5 30	2009 5 30	—	—	—	—	—		8.00	—	—	—	—	
			58	2006 5 30	2009 5 30	—	—	—	—	—		8.00	—	—	—	—	
			53	2006 5 30	2009 5 30	—	—	—	—	—		8.00	—	—	—	—	
			49	2006 5 30	2009 5 30	—	—	—	—	—		8.00	—	—	—	—	
			58	2006 5 30	2009 5 30	—	—	—	—	—		—	—	—	—	—	
			50	2006 5 30	2009 5 30	—	—	—	—	—		—	—	—	—	—	
			50	2006 5 30	2009 5 30	—	—	—	—	—		—	—	—	—	—	
			50	2006 5 30	2009 5 30	31,321	23,521	—	—	-7,800		35.34	—	—	—	—	
			48	2006 5 30	2009 5 30	—	—	—	—	—		43.32	—	—	—	—	
			50	2006 6 2	2009 6 2	—	—	—	—	—		80.78	—	—	—	—	
			44	2006 6 2	2009 6 2	—	—	—	—	—		91.16	—	—	—	—	
			50	2006 6 2	2009 6 2	15,200	15,200	—	—	—		70.96	—	—	—	—	
			41	2006 6 2	2009 6 2	—	—	—	—	—		80.99	—	—	—	—	
			44	2006 6 2	2009 6 2	—	—	—	—	—		76.01	—	—	—	—	
			44	2006 6 2	2009 6 2	—	—	—	—	—		75.91	—	—	—	—	
			41	2006 6 2	2009 6 2	—	—	—	—	—		94.51	—	—	—	—	
												928.30					

- (1) 2000 2002<sup>5</sup>
- (2) 1996 8 2000 11 ;
- (3) 1994 8 2004 12
- (4) 2002 1 2004 10 2004  
11 2005 1 2004 12 2005 1 2004
- (5) ( )
- (6) 1997 2003 4
- (7) 1997 2003
- (8) 1998 9 2003 2 2003 3  
2004 7
- (9) 1994
- (10)
- (11)
- (12) ( )
- (13)
- (14)
- (15)
- (16)

- (17) 2001 7 2004 7
- (18) 1991 2000
- (19) 1985 2000
- (20) 2000 12 2003 6 2003 6 2004 4
- (21) 2001 4 2004 12 2004 12
- (22) 1998 7 2003 12 ( )  
( ) 2004 1 2005 11
- (23) 2000 6 2002 12 2003 1 2003  
4 2003 5 2005 11

( )

			2002-07		
			2000-11		
			2004-12		
			2004-12		
			2004-12		
			2007-06		
			2001-04		

	/	/			
	/	/			

( )

2007

2

( )

2006

2006

3



( )

( )

10502

618

1

	5657
	1795
	389
	238
	1375
	1048

2

	109
	1004
	1870
	2542
	4977

( )

1

(1) 2007 1

( ) 6 “

(2) 2007 6 ( ) 2007 1 30  
4 4 ”

(3) 2007 9 ( )

(4)  
2 2007

[2007]28

[2007]18 ) 2007 5 (

( 2007 6 19 ) 6 15  
2007 7 17 ) 8 14  
(1) (2)  
(3)

(1)

;(2)

;(3)

2007 11 21 2007 11 21 ) (

( )

1

		( )	( )	( )	
	10	9	1	0	
	10	10	0	0	
	10	10	0	0	
	10	9	1	0	

2

( )

1

2

3

4

5

( )

1 2007 4 25

2006

2007

2 2007 6 21

2006

2007 4 27 6 26

[www.sse.com.cn](http://www.sse.com.cn) [www.dpc.com.cn](http://www.dpc.com.cn)

( )  
1

( )

( )

2

3

4



5

( )

( “ ” )

( )

1

2

3

4

5

( )

1

2

3

4

5

( )

( )

( )

( )

( )

( )

( )

( )

( )

( )

(1)

(2)

(3)

( )

1

2 2008

( )

( )

2008

( (2008) 0432 )

2007

( )

2007 4 25 2006

2007 4 26

( )

1

2007 9 21 2007

2007 9 22

2

2007 11 13 2007

2007 11 14

( )

1

(1)

①

2007

“ ”

”

“

134,714

2007  
43,758

449,148

23,546

②  
 ● 2007  
 2007 449,148 10.47% 12.62%  
 14.3 43,758 165.62%  
 27,030 64 19.91%  
 10.91 35.63% 3.31  
 2005-2007 15.05%  
 8.59% 10.67% 2007 81% 77% 4

●  
 2006  
 0

	62,340	9,937	13.54
	18,502	6,301	-0.77
	94,910	58,848	29.96
	42,526	21,308	-4.89
	218,278	96,395	14.11

20

13

“ ”

OTC

OTC

2.5

2006

71

(2)

①

●  
2008 GDP 10.2-10.8%  
2008 “ ” SFDA  
2008 7000 18  
“ ”

●

●  
“ ”

●

● GMP

●

② 2005-2010  
“ ” “ ” “ ”

2008

●

●

“ ”

”

●

“

6887

11.57%

8

3

26

●

2008

GMP

●

“

”

③

2008

( )  
1

			(%)	(%)	(%)	(%)
	2,182,778,829.49	963,948,996.70	55.84	14.11	9.72	1.77
	2,308,698,719.10	2,180,384,931.87	5.56	7.24	6.98	0.23
	4,491,477,548.59	3,144,333,928.57	29.99	10.47	7.81	1.73
( )	1,113,390,142.94	328,003,157.93	70.54	17.34	12.00	1.41
	949,103,826.08	588,483,878.14	38.00	29.96	23.06	3.48

2

		( )
	94,932,673.47	5.52
	1,481,627,787.51	11.21
	2,335,911,175.36	17.14
	636,055,501.94	7.47
	163,055,166.02	11.89
	202,484,056.73	-10.62
	344,228,751.83	-8.30
	864,648.72	12.03
	5,259,159,761.57	10.56
	767,682,212.98	
	4,491,477,548.59	10.47

( )

2,405.54                      579.46                      19.4%  
2007

		(%)
		11.63

1

2

- (1)                      5000                      2007    6
- (2)                      2500                      2007    12
- 3,484



( )

2.

( )

1

(1) 2007 1 31

2007

<

( ) >

2007 2 1

(2) 2007 3 28

2006

2006

2006

2006

2006

2006

2006

2007

2006

2007

2007

2006

2007 3 30

(3) 2007 4 25

2007

2007

2006

2007 4 27

(4) 2007 6 15

( )

2007 6 19

(5) 2007 6 21

2006

2007 6 26

(6) 2007 8 10

2007

2007

2007 8 13

(7) 2007 9 5

2007 9 6

(8) 2007 9 5

2007

2007 9 6

(9) 2007 10 25 2007 2007

(10) 2007 11 20 2007 10 26 2007

2007 11 21

2

2006 2006

2006 44107.57 2007 6 8 10 1.6 ( ) 2006

70,572,112 2007 6 8 2007 6 11

70,110,998.04

3

2007

(1)2008 1 29 2007

(2)

(3) 2007

(4) 2008 2 21 27

(5) 2008 3 9

1)

2007 2007

2)

(6)2008 3 21 2007 2007

1)

2)

2007 2007

3)

(7)2008 3 21 2007 2007

2008 2007

2008

4

( )

	2007	355,664,445.67	
35,566,444.57	2007	320,098,001.10	2007
70,572,109.88		361,410,985.97	2007
610,936,877.19			
	0.185	( )	

"

216(0.)70 1 T0. -1.247 TD<08EB04 Td[F09T0 1 T2CA5175029B0B4404AF3E

(3)

6

2007 9 5

7

2007 10 25

(1) 2007

(2)

(3) 2008

(4) 2007

8

2007 11 20

(1)

(2)

( )

( )

2007

( )

( )

( )

( )

1 ( “ ”)  
4416.69 700.34 2006 4 18

( “ ”) 2006 6 19 “ ”

2007 1 29 “ ”

2 2007 7 ( “ ”)

( “ ”)

5,413,697.11

( )

1

2007 3 21 ( “ ” ) 11.63%

2,405.54

“ ”

2000 8260.87

88.37% 11.63%

( (2007) 0085 ) 2006 12 31 33591

12420 21171 2006 28698 3887

2

2007 3 22 “ ” 90%

1

1998

7794.5 90%

10% [ (2006) 0858 ]

2006 10 31 12046 14113 -2068 2006

1-10 17174 -2572

[ (2006) 110 ] 2006 10 31

11986 14096 -2110

( )

1

2007 2

	2007	2006
	4,800,000.00	4,800,000.00
		2,048,758.01
	4,800,000.00	6,848,758.01

2

---

		418.98	572.43		
			2,429.78		
	/	418.98	3,002.21		

( )

( )

( )

( )

( )						
						27,527.01
						13,424.00
						13,424.00
					(%)	6.11
					70	10,024.00
					50	
						10,024.00

( )

( )

( )

	1			1	2005 441,075,700	2005
	2			10	1.8 ( )	
	2005	2006	2007		2006 6 30	2006
		2005		7 3		2006 7 7
		50%			(2005	
	3		(			50% )
			)	2		
					2006 12 31	44,107.57
					10	1.6 (
				)	70,572,112.00	
			(		2007 6 8	2007 6
			)	11		
					70,110,998.04	
	4			3	2006 5 29	
			5000			
					22,803,520	
					5.17%	
					215,653,887	
					48.89%	

( )

2007

200

2008



2007

( )

( )

1

	( )			( )
	506.50	-	1.03%	506.50
	2,000	-	2%	2,000
	2,506.50	-		2,506.50

2

(1)

2007 6 24

2007

2008 1 21

1 22

(2)

2007

( 2008

33,263.12

( 2007 10 26

2007 11 14

2008 4 30

2007 12 7

)

17,000

( )

(2008) 0998

2007

12 31

2007

1

2

3

2007

---

2007 12 31

2007

2008 4 8

( )

2007 12 31

		2007 12 31	2006 12 31
	1	654,288,053.40	468,188,202.98
	2	251,624,538.47	156,676,711.93
	3	499,675,230.68	507,188,756.55
	4	145,532,007.79	168,629,424.38
	5	230,964,508.97	70,041,996.18
	6	528,564,138.56	470,028,710.12
		-	
		2,310,648,477.87	1,840,753,802.14
	7	82,935,025.24	83,838,549.47
	8	102,470,516.67	107,095,536.87
	9	953,512,886.73	1,024,365,498.90
	10	43,873,150.43	49,133,492.81
	11	387,700.00	3,345,654.00
	12	142,862,496.57	151,308,467.68
	13	20,758,496.63	1755402.87
	14	812,728.98	812,728.98
	15	913,257.35	1,960,694.38
	16	14,288,638.91	17,080,976.46
		1,362,814,897.51	1,440,697,002.42
		<b>3,673,463,375.38</b>	<b>3,281,450,804.56</b>

( )  
2007 12 31

		2007 12 31	2006 12 31
	19	304,000,000.00	318,500,000.00
	20	203,080,829.62	171,232,235.33
	21	389,912,180.92	457,714,805.83
	22	68,838,485.27	32,104,960.35
	23	22,289,902.90	86,836,490.81
	24	120,311,005.48	63,959,200.52
		-	
	25	461,111.84	
	26	140,717,280.94	117,563,342.36
		7,000,000.00	
		-	
		1,256,610,796.97	1,247,911,035.20
	27	16,000,000.00	23,000,000.00
		-	-
	28	27,000,000.00	
	29	1,894,533.28	
		7,270,322.17	6,880,875.37
		52,164,855.45	29,880,875.37
		1,308,775,652.42	1,277,791,910.57
( )			
	30	441,075,700.00	441,075,700.00
	31	609,442,664.30	608,780,707.64
	32	166,120,418.76	130,553,974.19
	33	980,834,215.56	649,392,006.60
		2,197,472,998.62	1,829,802,388.43
		167,214,724.34	173,856,505.56
		2,364,687,722.96	2,003,658,893.99
		3,673,463,375.38	3,281,450,804.56

2007 12 31

		2007 12 31	2006 12 31
		8,737,717.65	203,711,618.37
		136,777,750.87	93,128,747.57
		85,088,392.38	66,587,672.05
		23,401,146.23	25,300,278.59
		6,416,000.00	6,416,000.00
		794,807,479.86	233,223,888.83
		80,344,100.76	70,246,810.77
		1,135,572,587.75	698,615,016.18
		462,761,620.41	451,206,683.20
		77,754,612.02	83,088,571.70
		364,440,851.31	478,475,936.35
		4,844,662.56	12,506,577.00
		72,275,618.10	80,424,577.48
		20,758,496.63	1,755,402.87
		2,226,663.80	4,686,303.40
		1,005,062,524.83	1,112,144,052.00
		2,140,635,112.58	1,810,759,068.18

( )

2007 12 31

		2007 12 31	2006 12 31
		170,000,000.00	170,000,000.00
		27,041,049.77	31,844,055.74
		1,048,032.39	1,349,412.86
		5,272,465.28	45,994,573.97
		51,631,830.76	8,358,049.44
		461,111.84	
		33,549,287.32	16,068,510.02
		289,003,777.36	273,614,602.03
		-	-
		27,000,000.00	
		1,894,533.28	
		5,116,593.37	4,616,593.37
		34,011,126.65	4,616,593.37
		323,014,904.01	278,231,195.40
		441,075,700.00	441,075,700.00
		599,487,212.62	599,487,212.62
		166,120,418.76	130,553,974.19
		610,936,877.19	361,410,985.97
		1,817,620,208.57	1,532,527,872.78
		2,140,635,112.58	1,810,759,068.18

## 2007 1-12

		2007 1-12	2006 1-12
	35	4,556,616,381.12	4,133,346,054.01
	35	3,186,254,272.57	2,966,524,321.06
	36	28,094,645.99	24,498,915.52
		660,694,248.83	536,099,522.80
		224,676,625.64	255,641,594.48
		11,433,776.25	19,266,523.05
	37	52,002,135.74	126,114,918.50
( “ ” )			
( “ ” )	38	304,236.77	5,991,149.89
( “ ” )		393,764,912.87	211,191,408.49
	39	212,573,913.23	34,146,983.85
	40	31,654,441.62	2,052,340.01
( “ ” )		574,684,384.48	243,286,052.33
	41	117,077,185.93	63,903,302.81
( “ ” )		457,607,198.55	179,382,749.52
		437,580,763.41	164,742,346.24
		20,026,435.14	14,640,403.28
( )	42	0.9921	0.3735
( )		0.9921	0.3735



2007 1-12

		2007 1-12	2006 1-12
		697,077,806.97	610,412,636.71
		272,538,124.65	287,198,260.24
		9,183,180.68	7,115,398.52
		27,569,858.35	29,972,707.30
		90,090,189.84	97,713,920.09
		7,242,107.25	9,533,458.62
		31,428,292.57	90,170,946.03
	( “ ” )		
	( “ ” )	86,877.44	10,611,936.29
	( “ ” )	259,112,931.07	99,319,882.20
		187,645,215.40	7,040,417.19
		27,119,471.62	-1,054,462.70
	( “ ” )	419,638,674.85	107,414,762.09
		63,974,229.18	20,968,561.96
	( “ ” )	355,664,445.67	86,446,200.13
( )		0.8064	0.1960
( )		0.8064	0.1960

2007 1-12

		2007 1-12	2006 1-12
		4,543,190,020.92	3,978,055,487.57
		-	3,286,194.30
	43	11,906,704.00	146,458,159.34
		4,555,096,724.92	4,127,799,841.21
		2,928,558,001.27	2,562,975,848.33
		376,939,497.83	342,232,243.68
		378,290,158.74	329,225,351.27
	44	635,850,904.71	589,743,333.52
		4,319,638,562.55	3,824,176,776.80
		235,458,162.37	303,623,064.41
		31,201.00	45,071,304.77
		2,001,560.00	322,104.27
		171,788,534.09	41,604,891.71
		-	
	45	13,004,229.82	7,802,146.70
		186,825,524.91	94,800,447.45
		136,172,576.04	171,704,449.88
		24,055,400.00	10,350,000.00
		-	
		-	
		160,227,976.04	182,054,449.88
		26,597,548.87	-87,254,002.43
		5,000,000.00	
		300,000,000.00	392,000,000.00
			826,100.00
		305,000,000.00	392,826,100.00
		314,500,000.00	689,300,000.00
		93,166,398.72	106,383,415.90
	46	437,719.54	506,571.17
		408,104,118.26	796,189,987.07
		-103,104,118.26	-403,363,887.07
		113,432.54	413,961.84
		159,065,025.52	-186,580,863.25
		391,246,690.24	577,827,553.49
		550,311,715.76	391,246,690.24

2007 1-12

	2007 1-12	2006 1-12
	584,108,014.98	559,601,706.55
	-	
	13,321,040.13	92,318,259.31
	597,429,055.11	651,919,965.86
	115,388,941.04	132,420,576.20
	111,532,313.26	99,139,042.25
	134,894,043.40	111,388,290.97
	457,850,551.49	197,423,992.17
	819,665,849.19	540,371,901.59
	-222,236,794.08	111,548,064.27
	1.00	84,599,027.20
	2,000,000.00	212,860.67
	171,108,047.80	7,252,341.96
	-	
	3,541,603.38	4,471,222.46
	176,649,652.18	96,535,452.29
	46,056,897.25	23,209,944.28
	24,055,400.00	
	-	
	-	
	70,112,297.25	23,209,944.28
	106,537,354.93	73,325,508.01
	-	
	170,000,000.00	170,000,000.00
		736,100.00
	170,000,000.00	170,736,100.00
	170,000,000.00	385,000,000.00
	80,056,133.04	93,403,070.35
	169,985.43	217,101.81
	250,226,118.47	478,620,172.16
	-80,226,118.47	-307,884,072.16
	113,432.54	221,867.11
	-195,812,125.08	-122,788,632.77
	203,711,618.37	326,500,251.14
	7,899,493.29	203,711,618.37

	441,075,700.00	608,780,707.64		238,700,497.51	526,986,635.89		-	1,815,543,541.04
	-	-	-	-108,146,523.32	122,405,370.71	-	173,856,505.56	188,115,352.95
	-	-	-	-	-	-	-	-
	441,075,700.00	608,780,707.64	-	130,553,974.19	649,392,006.60	-	173,856,505.56	2,003,658,893.99
( “ ” )		661,956.66		35,566,444.57	331,442,208.96	-	-6,641,781.22	361,028,828.97
( )					437,580,763.41		20,026,435.14	457,607,198.55
( )		661,956.66						661,956.66
1								-
2								-
3								-
4		661,956.66						661,956.66
( ) ( )		661,956.66	-	-	437,580,763.41	-	20,026,435.14	458,269,155.21
( )	-	-	-	-	-	-	-26,668,216.36	-26,668,216.36
1								-
2								-
3							-26,668,216.36	-26,668,216.36
( )				35,566,444.57	-106,138,554.45	-	-	-70,572,109.88
1				35,566,444.57	-35,566,444.57			-
2 ( )					-70,572,109.88			-70,572,109.88
3								-
( )								-
1 ( )								-
2 ( )								-
3								-
4								-
	441,075,700.00	609,442,664.30	-	166,120,418.76	980,834,215.56	-	167,214,724.34	2,364,687,722.96

( )

2006 1-12

			:					
	441,075,700.00	607,759,563.40		217,722,856.73	462,464,509.21	-1,152,973.55	-	1,727,869,655.79
	-	-	-	-95,813,502.55	110,223,395.13	1,152,973.55	205,278,411.83	220,841,277.96
	-	-	-	-	-	-	-	-
	441,075,700.00	607,759,563.40	-	121,909,354.18	572,687,904.34	-	205,278,411.83	1,948,710,933.75
( “ ” )		1,021,144.24	-	8,644,620.01	76,704,102.26	-	-31,421,906.27	54,947,960.24
( )					164,742,346.24		14,640,403.28	179,382,749.52
( )		1,021,144.24						1,021,144.24
1								-
2		285,044.24						285,044.24
3								-
4		736,100.00						736,100.00
( ) ( )		1,021,144.24	-	-	164,742,346.24	-	14,640,403.28	180,403,893.76
( )							-46,062,309.55	-46,062,309.55
1								-
2								-
3							-46,062,309.55	-46,062,309.55
( )				8,644,620.01	-88,038,243.98	-	-	-79,393,623.97
1				8,644,620.01	-8,644,620.01			-
2					-79,393,623.97			-79,393,623.97
3								-
( )								-
1								-
2								-
3								-
4								-
	441,075,700.00	608,780,707.64	-	130,553,974.19	649,392,006.60	-	173,856,505.56	2,003,658,893.99

2007 1-12

			:			
	441,075,700.00	608,780,707.64		183,238,552.68	607,941,283.36	1,841,036,243.68
		-9,293,495.02		-52,684,578.49	-246,530,297.39	-308,508,370.90
						-
	441,075,700.00	599,487,212.62	-	130,553,974.19	361,410,985.97	1,532,527,872.78
( “ ” )	-	-	-	35,566,444.57	249,525,891.22	285,092,335.79
( )					355,664,445.67	355,664,445.67
( )						-
1						-
2						-
3						-
4						-
( ) ( )	-	-	-	-	355,664,445.67	355,664,445.67
( )						-
1						-
2						-
3						-
( )				35,566,444.57	-106,138,554.45	-70,572,109.88
1				35,566,444.57	-35,566,444.57	-
2					-70,572,109.88	-70,572,109.88
3						-
( )						-
1						-
2						-
3						-
4						-
	441,075,700.00	599,487,212.62	-	166,120,418.76	610,936,877.19	1,817,620,208.57

( )

2006 1-12

			:			
	441,075,700.00	607,759,563.40		167,435,535.96	545,107,756.82	1,761,378,556.18
		-9,008,450.78		-45,526,181.78	-182,104,727.00	-236,639,359.56
						-
	441,075,700.00	598,751,112.62	-	121,909,354.18	363,003,029.82	1,524,739,196.62
( “ ” )	-	736,100.00	-	8,644,620.01	-1,592,043.85	7,788,676.16
( )					86,446,200.13	86,446,200.13
( )		736,100.00				736,100.00
1						-
2						-
3						-
4		736,100.00				736,100.00
( ) ( )	-	736,100.00	-	-	86,446,200.13	87,182,300.13
( )						-
1						-
2						-
3						-
( )	-	-	-	8,644,620.01	-88,038,243.98	-79,393,623.97
1				8,644,620.01	-8,644,620.01	-
2					-79,393,623.97	-79,393,623.97
3						-
( )						-
1						-
2						-
3						-
4						-
	441,075,700.00	599,487,212.62	-	130,553,974.19	361,410,985.97	1,532,527,872.78





1.

1 1 12 31

2

3

4

5.

1

2

"

"

"

"

"

"

6

1

A

B.

2

7

3

4

5

6

( )

7

7.

—

—

1%  
10%  
30%  
50%  
80%  
100%

8.

1

2

3

4

9.

1

2

8    —  
2007 1 1

10.

11.

1

2

<hr/>	<hr/>	<hr/>	<hr/>
	20-30	3%	3. 23-4. 85%
	7-14	3%	6. 93-13. 86%
	8	3%	12. 13%
	5	3%	19. 4%

12

13

14

15.  
1

A

B.

C.

2

3

16.

17.

18.

A

B.

C.

19.

1

2

3

20.

1

2

3

4

21.

22.

1

23.

A

B

A

B

25.

1

2

26



1.

2

2

1.

\_\_\_\_\_

\_\_\_\_\_

13% 17%  
3% 5%  
5% 7%  
15% 33%

\_\_\_\_\_

15%  
15%  
33%  
15%  
33%  
15%  
33%  
33%  
15%  
33%  
33%

( )

( )

2

1

190

2000 10

15%

(2000)

2

15%

3

[1999] 76

2000 288

2000

1

1

2004

2005 1568

2005 1

1

2006 12 31  
15%

[2007] 1

2007 1 1

---

4 (1999) 508  
 1999 1 1 2001 12 31  
 2001 588 2002 1 1 2004 12 31 7.5% 2005  
 15%  
 5 2000 3 28 2001 1 15%  
 6 2007 3 16 (" ")  
 2008 1 1

1. 2007 12 31

					%	%	%
		5,932.68		5,247.93	88.46	-	88.46
		5,622.92		4,779.48	85.00	-	85.00
		8,386.26		5,000.00	59.62	-	59.62
		1,777.78		1,600.00	90.00	-	90.00
		8,260.87		9,705.54	100.00	-	100.00
		12,470.82		11,600.00	93.02	-	93.02
		5,542.16		5,200.00	93.83	-	93.83
		8,222.19		4,700.00	56.68	-	56.68
		4,419.10		4,000.00	90.52	-	90.52
		7,672.59		4,000.00	52.13	-	52.13
		1,500.00		500.00	33.33	58.98	92.31
( )		80.00		60.00	75.00	-	75.00
( )		150.00		45.00	30.00	61.92	91.92
2							
						1996 2	
						38	
						33	

" 2006 2007

1.

	<u>2007. 12. 31</u>	<u>2006. 12. 31</u>
	1, 108, 344. 57	2, 209, 757. 14
	549, 203, 371. 19	389, 943, 864. 49
	<u>103, 976, 337. 64</u>	<u>76, 034, 581. 35</u>
	<u>654, 288, 053. 40</u>	<u>468, 188, 202. 98</u>

	<u>2007. 12. 31</u>				<u>2006. 12. 31</u>	
	98. 62	7. 3046	720. 38	20, 035. 95	7. 8087	156, 454. 72
	7. 74	10. 6669	82. 56	-	-	-

2007 12 31

654, 288, 053. 40

103, 976, 337. 64

-

2007 12 31

550, 311, 715. 76

2006 12 31

391, 246, 690. 24

159, 065, 025. 52

2007 12 31

101, 310, 228. 09

2.

	<u>2007. 12. 31</u>	<u>2006. 12. 31</u>
	251, 624, 538. 47	156, 676, 711. 93
2007	94, 947, 826. 54	60. 60%

3  
1  
A.

	<u>2007. 12. 31</u>		<u>2006. 12. 31</u>			
	_____	_____%	_____	_____%		
(1000 )	39, 477, 480. 78	5. 90	434, 941. 09	26, 244, 973. 60	3. 92	124, 302. 46
	-	-	-	-	-	-
	<u>629, 415, 961. 84</u>	<u>94. 10</u>	<u>168, 783, 270. 85</u>	<u>642, 497, 790. 35</u>	<u>96. 08</u>	<u>161, 429, 704. 94</u>
	<u>668, 893, 442. 62</u>	<u>100. 00</u>	<u>169, 218, 211. 94</u>	<u>668, 742, 763. 95</u>	<u>100. 00</u>	<u>161, 554, 007. 40</u>

B.

	<u>2007. 12. 31</u>		<u>2006. 12. 31</u>				
	_____	_____%	_____	_____%			
472, 396, 962. 65	70. 62	9, 836, 621. 44	2. 08	445, 279, 609. 61	66. 59	14, 073, 336. 88	3. 16
25, 531, 642. 02	3. 82	8, 892, 805. 85	34. 83	57, 837, 076. 92	8. 65	23, 519, 136. 86	40. 66
24, 567, 610. 09	3. 67	22, 342, 508. 48	90. 94	42, 410, 792. 76	6. 34	20, 019, 873. 03	47. 20
33, 054, 146. 32	4. 94	21, 700, 966. 79	65. 65	37, 006, 459. 08	5. 53	21, 513, 940. 30	58. 14
35, 775, 926. 03	5. 35	28, 878, 153. 87	80. 72	43, 228, 876. 85	6. 46	39, 447, 771. 60	91. 25
<u>77, 567, 155. 51</u>	<u>11. 60</u>	<u>77, 567, 155. 51</u>	100. 00	<u>42, 979, 948. 73</u>	<u>6. 43</u>	<u>42, 979, 948. 73</u>	100. 00
<u>668, 893, 442. 62</u>	<u>100. 00</u>	<u>169, 218, 211. 94</u>		<u>668, 742, 763. 95</u>	<u>100. 00</u>	<u>161, 554, 007. 40</u>	

C.

	<u>2007. 01. 01</u>		<u>2007. 12. 31</u>
	161, 554, 007. 40	14, 757, 954. 63	- 7, 093, 750. 09
			169, 218, 211. 94
			7, 093, 750. 09

D.	2007	12	31	110, 893, 922. 41
E.	2007	12	31	31, 855, 825. 59
F.	2007	12	31	5%( 5%)
				44, 635, 508. 58
	6. 67%		2	

2

A

		<u>2007. 12. 31</u>		<u>2006. 12. 31</u>			
		_____	_____%	_____	_____%		
(1000	)	73,982,158.96	82.63	- 67,578,722.69	95.92	-	
		-	-	-	-	-	
		<u>15,548,896.39</u>	<u>17.37</u>	<u>4,442,662.97</u>	<u>2,871,617.73</u>	<u>4.08</u>	<u>3,862,668.37</u>
		<u>89,531,055.35</u>	<u>100.00</u>	<u>4,442,662.97</u>	<u>70,450,340.42</u>	<u>100.00</u>	<u>3,862,668.37</u>

B

		<u>2007. 12. 31</u>		<u>2006. 12. 31</u>					
		_____	_____%	_____	_____%				
		79,472,197.57	88.78	91,717.06	0.12	57,000,315.58	80.92	56,167.61	0.10
		1,695,108.66	1.89	169,510.87	10.00	2,876,340.84	4.08	28,274.82	0.98
		2,054,593.12	2.29	616,377.94	30.00	9,661,725.80	13.71	2,898,517.74	30.00
		5,462,397.80	6.10	2,731,198.90	50.00	129,700.00	0.18	97,450.00	75.13
		64,500.00	0.07	51,600.00	80.00	-	-	-	-
		<u>782,258.20</u>	<u>0.87</u>	<u>782,258.20</u>	<u>100.00</u>	<u>782,258.20</u>	<u>1.11</u>	<u>782,258.20</u>	<u>100.00</u>
		<u>89,531,055.35</u>	<u>100.00</u>	<u>4,442,662.97</u>		<u>70,450,340.42</u>	<u>100.00</u>	<u>3,862,668.37</u>	

C

<u>2007. 01. 01</u>	_____	_____	_____	<u>2007. 12. 31</u>
3,862,668.37	579,994.60	-	-	4,442,662.97

D

2007 12 31 5% 5%

E

2007 12 31 86,413,108.15  
96.52% 1

4.

1

	<u>2007. 12. 31</u>		<u>2006. 12. 31</u>	
	—	%	—	%
	119,010,790.52	81.78	142,617,549.97	84.58
	14,910,080.59	10.25	21,770,706.21	12.91
	9,667,445.96	6.64	2,785,795.45	1.65
	1,943,690.72	1.33	1,455,372.75	0.86
	<u>145,532,007.79</u>	<u>100.00</u>	<u>168,629,424.38</u>	<u>100.00</u>

2

2007 12 31

5% ( 5%)

3

1

5.

1

A.

	<u>2007. 12. 31</u>			<u>2006. 12. 31</u>		
	—	%	—	—	%	—
(1000 )	251,826,460.73	70.22	90,821,572.73	89,195,260.73	48.42	89,195,260.73
	106,812,008.96	29.78	36,852,387.99	95,005,016.96	51.58	24,963,020.78
	<u>358,638,469.69</u>	<u>100.00</u>	<u>127,673,960.72</u>	<u>184,200,277.69</u>	<u>100.00</u>	<u>114,158,281.51</u>

B.

	<u>2007. 12. 31</u>			<u>2006. 12. 31</u>		
	—	%	—	—	%	—
	215,759,270.66	60.16	9,497,606.58	44,260,890.28	24.03	1,209,900.48
	26,953,631.15	7.52	20,041,398.79	69,697,765.39	37.84	50,224,314.62
	52,366,261.68	14.60	50,506,626.74	45,394,305.05	24.64	40,137,564.91
	40,906,141.69	11.41	26,161,198.37	7,547,473.43	4.10	5,716,474.37
	5,965,976.20	1.66	4,779,941.93	2,555,746.30	1.39	2,125,929.89
	<u>16,687,188.31</u>	<u>4.65</u>	<u>16,687,188.31</u>	<u>14,744,097.24</u>	<u>8.00</u>	<u>14,744,097.24</u>
	<u>358,638,469.69</u>	<u>100.00</u>	<u>127,673,960.72</u>	<u>184,200,277.69</u>	<u>100.00</u>	<u>114,158,281.51</u>

2007

2007	174,438,192.00	94.70%	
	162,631,200.00		39

C.

	<u>2007.01.01</u>			<u>2007.12.31</u>
	114,158,281.51	14,374,706.46	-	859,027.25
D	2007 12 31		106,841,023.35	127,673,960.72
E	2007 12 31		65,198,086.28	
F			5% ( 5%)	
	2007 12 31		180,738,600.63	
	50.40%	1		

2

A.

	<u>2007.12.31</u>		<u>2006.12.31</u>	
(1000 )		%		%
	880,088,909.66	96.79	98,693,004.41	308,533,711.80
	-	-	-	-
	<u>29,169,507.55</u>	<u>3.21</u>	<u>15,757,932.94</u>	<u>23,987,511.61</u>
	<u>909,258,417.21</u>	<u>100.00</u>	<u>114,450,937.35</u>	<u>332,521,223.41</u>
			<u>7.21</u>	<u>2,230,642.17</u>
			<u>100.00</u>	<u>99,297,334.58</u>

B.

	<u>2007.12.31</u>		<u>2006.12.31</u>	
	%		%	
606,598,943.33	66.71	1,683,525.39	0.28	134,121,423.77
133,920,770.25	14.73	19,512,365.97	14.57	147,854,989.58
123,027,473.75	13.53	54,417,412.70	44.23	45,887,948.39
41,244,779.55	4.54	34,380,009.83	83.36	4,242,122.03
4,213,029.18	0.46	4,204,202.31	99.79	266,209.94
<u>253,421.15</u>	<u>0.03</u>	<u>253,421.15</u>	100.00	<u>148,529.70</u>
<u>909,258,417.21</u>	<u>100.00</u>	<u>114,450,937.35</u>		<u>332,521,223.41</u>
				<u>100.00</u>
				<u>99,297,334.58</u>

C.

<u>2007. 01. 01</u>				<u>2007. 12. 31</u>
99, 297, 334. 58	15, 153, 602. 77	-	-	114, 450, 937. 35

D.

2007 12 31 5% ( 5%)

E.

2007 12 31 77. 01% 1 700, 261, 454. 15

6.

1

<u>2007. 01. 01</u>			<u>2007. 12. 31</u>
44, 135, 778. 26	451, 468, 135. 77	433, 767, 144. 25	61, 836, 769. 78
402, 473, 835. 89	3, 161, 193, 551. 43	3, 145, 972, 753. 91	417, 694, 633. 41
27, 856, 312. 34	549, 775, 517. 01	530, 261, 259. 07	47, 370, 570. 28
6, 205, 207. 28	91, 339, 815. 89	89, 662, 077. 82	7, 882, 945. 35
2, 199, 608. 32	14, 708, 148. 80	15, 830, 556. 71	1, 077, 200. 41
206, 352. 15	15, 679, 535. 20	15, 885, 887. 35	-
<u>9, 276, 159. 74</u>	<u>5, 230, 578. 12</u>	<u>1, 921, 471. 00</u>	<u>12, 585, 266. 86</u>
<u>492, 353, 253. 98</u>	<u>4, 289, 395, 282. 22</u>	<u>4, 233, 301, 150. 11</u>	<u>548, 447, 386. 09</u>

2

<u>2007. 01. 01</u>			<u>2007. 12. 31</u>
885, 660. 89	1, 824, 111. 01	- 1, 750, 596. 84	959, 175. 06
20, 509, 076. 14	3, 625, 508. 98	- 5, 372, 050. 44	18, 762, 534. 68
840, 875. 74	-	- 840, 875. 74	-
88, 931. 09	-	-	88, 931. 09
-	<u>72, 606. 70</u>	-	<u>72, 606. 70</u>
<u>22, 324, 543. 86</u>	<u>5, 522, 226. 69</u>	- <u>7, 963, 523. 02</u>	<u>19, 883, 247. 53</u>



7.  
1

	<u>2007. 01. 01</u>			<u>2007. 12. 31</u>
	38, 475, 168. 60	302, 675. 77	-	38, 777, 844. 37
	<u>166, 062, 004. 82</u>	<u>5, 065, 000. 00</u>	<u>15, 631, 200. 00</u>	<u>155, 495, 804. 82</u>
	<u>204, 537, 173. 42</u>	<u>5, 367, 675. 77</u>	<u>15, 631, 200. 00</u>	<u>194, 273, 649. 19</u>
	<u>-120, 698, 623. 95</u>	<u>-1, 175, 000. 00</u>	<u>-10, 535, 000. 00</u>	<u>-111, 338, 623. 95</u>
	<u>83, 838, 549. 47</u>	<u>4, 192, 675. 77</u>	<u>5, 096, 200. 00</u>	<u>82, 935, 025. 24</u>

A.

	38. 94%	38. 94%	100, 423, 787. 58	84, 223, 361. 74	1, 066, 910. 86
	49. 00%	49. 00%	9, 969, 798. 30	3, 223, 702. 61	-1, 367, 618. 26
	70. 00%	70. 00%	4, 396, 504. 34	14, 441, 314. 70	796, 219. 47

B.

	38. 00%	38. 00%
	66. 61%	66. 61%
	81. 16%	81. 16%
	65. 00%	65. 00%
	-	-
	1. 03%	1. 03%
	11. 60%	11. 60%
	2. 00%	2. 00%
	20. 00%	20. 00%
	6. 41%	6. 41%
	60. 00%	60. 00%
	-	-
	10. 00%	10. 00%

C.

		<u>2007. 01. 01</u>			<u>2007. 12. 31</u>
	65, 223. 95	65, 223. 95	-	-	65, 223. 95
	40, 000, 000. 00	40, 000, 000. 00	-	-	40, 000, 000. 00
	50, 000, 000. 00	50, 000, 000. 00	-	-	50, 000, 000. 00
	8, 775, 000. 00	8, 775, 000. 00	-	-	8, 775, 000. 00
	15, 600, 000. 00	15, 600, 000. 00	-	15, 600, 000. 00	-
	5, 065, 000. 00	-	5, 065, 000. 00	-	5, 065, 000. 00
	20, 000, 000. 00	20, 000, 000. 00	-	-	20, 000, 000. 00
	20, 000, 000. 00	20, 000, 000. 00	-	-	20, 000, 000. 00
	7, 998, 000. 00	7, 998, 000. 00	-	-	7, 998, 000. 00
	500, 000. 00	500, 000. 00	-	-	500, 000. 00
	600, 000. 00	600, 000. 00	-	-	600, 000. 00
	31, 200. 00	31, 200. 00	-	31, 200. 00	-
	2, 492, 580. 87	<u>2, 492, 580. 87</u>	-	-	<u>2, 492, 580. 87</u>
		<u>166, 062, 004. 82</u>	<u>5, 065, 000. 00</u>	<u>15, 631, 200. 00</u>	<u>155, 495, 804. 82</u>

14. 017

9. 1

100

		1. 03%	506. 50	4. 917	
, 506. 50					506. 50

D.

		<u>2007. 01. 01</u>			<u>2007. 12. 31</u>
40, 000, 000. 00	30, 808, 626. 72	-	415, 455. 09	-	31, 224, 081. 81
4, 900, 000. 00	5, 564, 057. 09	-	-670, 132. 95	-	4, 893, 924. 14
1, 609, 400. 00	<u>2, 102, 484. 79</u>	-	<u>557, 353. 63</u>	-	<u>2, 659, 838. 42</u>
	<u>38, 475, 168. 60</u>	=	<u>302, 675. 77</u>	=	<u>38, 777, 844. 37</u>

E.

	<u>2007. 01. 01</u>			<u>2007. 12. 31</u>
	600,000.00	-	-	600,000.00
	5,000,000.00	-	-	5,000,000.00
	6,398,400.00	-	-	6,398,400.00
	9,360,000.00	1,175,000.00	10,535,000.00	-
	8,775,000.00	-	-	8,775,000.00
	500,000.00	-	-	500,000.00
	40,000,000.00	-	-	40,000,000.00
	50,000,000.00	-	-	50,000,000.00
	<u>65,223.95</u>	<u>-</u>	<u>-</u>	<u>65,223.95</u>
	<u>120,698,623.95</u>	<u>1,175,000.00</u>	<u>10,535,000.00</u>	<u>111,338,623.95</u>

2

	<u>2007. 01. 01</u>			<u>2007. 12. 31</u>
	534,874,120.00	24,055,400.00	-	558,929,520.00
	-	-	-	-
	41,411,411.64	86,876.44	-	41,498,288.08
	<u>162,938,223.95</u>	<u>5,065,000.00</u>	<u>15,600,000.00</u>	<u>152,403,223.95</u>
	739,223,755.59	29,207,276.44	15,600,000.00	752,831,032.03
	<u>-288,017,072.39</u>	<u>-12,587,339.23</u>	<u>-10,535,000.00</u>	<u>-290,069,411.62</u>
	<u>451,206,683.20</u>	<u>16,619,937.21</u>	<u>5,065,000.00</u>	<u>462,761,620.41</u>

A.

	210,725,374.07	1,100,626,619.35		16,532,735.73
	95,952,230.55	33,454,709.56		5,296,478.91
	150,125,778.62	197,152,893.99		19,646,307.39
	38,074,609.15	38,344,193.00		650,655.22
	251,973,187.11	439,310,752.03		36,774,089.49
	54,958,159.45	234,178,691.22		-1,768,914.41
	27,613,270.54	128,549,101.96		8,628,677.07
	130,264,708.02	2,200,437,121.63		20,391,052.68
	369,719.11	83,437,099.77		-10,788,901.54
	-19,172,049.12	128,477,734.81		-11,300,617.44
	-2,789,549.06	50,542,240.11		-525,142.71

## B.

	33.33%	33.33%	15,594,367.57	49,579,663.38	478,119.24
	30.00%	30.00%	607,323.86	26,762,312.64	607,323.86
	38.94%	38.94%	100,423,787.58	84,223,361.74	1,066,910.86
	49.00%	49.00%	9,969,798.30	3,223,702.61	-1,367,618.26

## C.

	38.00%	38.00%
	66.61%	66.61%
	81.16%	81.16%
	65.00%	65.00%
	-	-
	1.03%	1.03%
	11.60%	11.60%
	2.00%	2.00%
	20.00%	20.00%
	6.41%	6.41%

## D.

	<u>2007. 01. 01</u>		<u>2007. 12. 31</u>
52,479,300.00	52,479,300.00	-	52,479,300.00
47,794,800.00	47,794,800.00	-	47,794,800.00
50,000,000.00	50,000,000.00	-	50,000,000.00
16,000,020.00	16,000,020.00	-	16,000,020.00
97,055,400.00	73,000,000.00	24,055,400.00	97,055,400.00
116,000,000.00	116,000,000.00	-	116,000,000.00
52,000,000.00	52,000,000.00	-	52,000,000.00
47,000,000.00	47,000,000.00	-	47,000,000.00
40,000,000.00	40,000,000.00	-	40,000,000.00
40,000,000.00	40,000,000.00	-	40,000,000.00
600,000.00	600,000.00	-	600,000.00
65,223.95	65,223.95	-	65,223.95
40,000,000.00	40,000,000.00	-	40,000,000.00

	<u>2007. 01. 01</u>			<u>2007. 12. 31</u>
50,000,000.00	50,000,000.00	-	-	50,000,000.00
8,775,000.00	8,775,000.00	-	-	8,775,000.00
15,600,000.00	15,600,000.00	-	15,600,000.00	-
5,065,000.00	-	5,065,000.00	-	5,065,000.00
20,000,000.00	20,000,000.00	-	-	20,000,000.00
20,000,000.00	20,000,000.00	-	-	20,000,000.00
7,998,000.00	7,998,000.00	-	-	7,998,000.00
500,000.00	500,000.00	-	-	500,000.00
	<u>697,812,343.95</u>	<u>29,120,400.00</u>	<u>15,600,000.00</u>	<u>711,332,743.95</u>

E.

	<u>2007. 01. 01</u>			<u>2007. 12. 31</u>	
5,000,000.00	5,038,727.83	-	159,357.14	-	5,198,084.97
40,000,000.00	30,808,626.72	-	415,455.09	-	31,224,081.81
4,900,000.00	5,564,057.09	-	-670,132.95	-	4,893,924.14
450,000.00	-	-	182,197.16	-	182,197.16
	<u>41,411,411.64</u>	<u>-</u>	<u>86,876.44</u>	<u>-</u>	<u>41,498,288.08</u>

F.

	<u>2007. 01. 01</u>			<u>2007. 12. 31</u>
5,000,000.00	-	-	-	5,000,000.00
6,398,400.00	-	-	-	6,398,400.00
9,360,000.00	1,175,000.00	10,535,000.00	-	-
8,775,000.00	-	-	-	8,775,000.00
500,000.00	-	-	-	500,000.00
63,232,475.90	1,646,225.55	-	-	64,878,701.45
34,186,755.95	-	-	-	34,186,755.95
29,899,216.59	9,766,113.68	-	-	39,665,330.27
40,000,000.00	-	-	-	40,000,000.00
40,000,000.00	-	-	-	40,000,000.00
50,000,000.00	-	-	-	50,000,000.00
600,000.00	-	-	-	600,000.00
	<u>65,223.95</u>	<u>-</u>	<u>-</u>	<u>65,223.95</u>
	<u>288,017,072.39</u>	<u>12,587,339.23</u>	<u>10,535,000.00</u>	<u>290,069,411.62</u>

8

1

	<u>2007. 01. 01</u>			<u>2007. 12. 31</u>
	115, 728, 084. 67	-	-	115, 728, 084. 67

2

	<u>2007. 01. 01</u>			<u>2007. 12. 31</u>
	8, 632, 547. 80	4, 625, 020. 20	-	13, 257, 568. 00

3

	<u>2007. 01. 01</u>		<u>2007. 12. 31</u>
	107, 095, 536. 87		102, 470, 516. 67

2007 12 31  
48, 354, 339. 50

51, 714, 129. 74

9.

1

	<u>2007. 01. 01</u>			<u>2007. 12. 31</u>
	794, 218, 341. 55	29, 034, 615. 59	132, 119, 452. 63	691, 133, 504. 51
	545, 584, 253. 80	122, 673, 544. 18	5, 566, 504. 94	662, 691, 293. 04
	52, 785, 069. 03	11, 084, 459. 01	10, 209, 617. 84	53, 659, 910. 20
	<u>30, 752, 571. 34</u>	<u>3, 330, 004. 92</u>	<u>1, 249, 317. 42</u>	<u>32, 833, 258. 84</u>
	<u>1, 423, 340, 235. 72</u>	<u>166, 122, 623. 70</u>	<u>149, 144, 892. 83</u>	<u>1, 440, 317, 966. 59</u>

88, 240, 595. 72

2

<u>2007. 01. 01</u>			<u>2007. 12. 31</u>
108, 826, 028. 36	22, 746, 519. 48	5, 736, 542. 15	125, 836, 005. 69
231, 829, 928. 07	57, 546, 305. 11	3, 467, 224. 69	285, 909, 008. 49
25, 974, 848. 24	5, 548, 087. 00	4, 680, 089. 66	26, 842, 845. 58
<u>20, 908, 446. 32</u>	<u>2, 034, 556. 70</u>	<u>962, 284. 62</u>	<u>21, 980, 718. 40</u>
<u>387, 539, 250. 99</u>	<u>87, 875, 468. 29</u>	<u>14, 846, 141. 12</u>	<u>460, 568, 578. 16</u>

3

<u>2007. 01. 01</u>			<u>2007. 12. 31</u>
-	11, 820, 187. 30	-	11, 820, 187. 30
11, 325, 478. 69	4, 265, 172. 01	1, 271, 232. 09	14, 319, 418. 61
110, 007. 14	-	100, 000. 00	10, 007. 14
-	<u>86, 888. 65</u>	-	<u>86, 888. 65</u>
<u>11, 435, 485. 83</u>	<u>16, 172, 247. 96</u>	<u>1, 371, 232. 09</u>	<u>26, 236, 501. 70</u>

4

<u>2007. 01. 01</u>	<u>2007. 12. 31</u>
685, 392, 313. 19	553, 477, 311. 52
302, 428, 847. 04	362, 462, 865. 94
26, 700, 213. 65	26, 807, 057. 48
<u>9, 844, 125. 02</u>	<u>10, 765, 651. 79</u>
<u>1, 024, 365, 498. 90</u>	<u>953, 512, 886. 73</u>

10.

1

		14,000,000.00	100.00%
	E	4,277,000.00	100.00%
		7,580,000.00	40.00%
		600,000.00	100.00%
		492,000.00	100.00%
		712,000.00	100.00%
		23,000,000.00	100.00%
		1,200,000.00	100.00%
		510,000.00	100.00%
		480,000.00	100.00%
		54,430,000.00	80.00%
		3,000,000.00	70.00%
		18,500,000.00	50.00%
	M	7,570,000.00	30.00%
1		2,000,000.00	100.00%
		3,000,000.00	60.00%
		19,540,000.00	5.00%
		34,880,000.00	10.00%
		150,000.00	100.00%
		138,980,000.00	1.00%
		38,580,000.00	40.00%
		13,600,000.00	100.00%
		50,000,000.00	100.00%
		52,900,000.00	



2

		<u>2007. 01. 01</u>		<u>2007. 12. 31</u>	
		8,369,706.00	558,000.00	8,927,706.00	-
E		3,026,519.51	448,876.00	3,475,395.51	-
		423,772.00	2,911,367.50	7,200.00	3,327,939.50
		-	514,385.58	514,385.58	-
		267,000.00	225,000.00	492,000.00	-
		-	712,000.00	712,000.00	-
		58,744.80	104,989.00	163,733.80	-
		-	1,075,000.00	1,075,000.00	-
		-	496,913.00	496,913.00	-
		-	471,734.00	471,734.00	-
		14,414,697.62	31,560,788.00	44,572,351.01	1,403,134.61
		1,803,741.22	401,411.62	2,195,039.70	10,113.14
		1,317,700.00	9,339,589.20	-	10,657,289.20
M		1,184,678.32	1,426,721.96	2,524,852.28	86,548.00
1		1,040,474.19	301,531.00	1,342,005.19	-
		-	1,888,719.58	-	1,888,719.58
		-	1,186,724.42	-	1,186,724.42
		-	4,002,650.45	-	4,002,650.45
		-	141,176.31	141,176.31	-
		-	130,000.00	-	130,000.00
		6,883,262.53	11,126,565.32	-	18,009,827.85
		8,119,112.14	3,431,454.00	11,550,566.14	-
		300,975.30	4,382,761.08	4,683,736.38	-
		<u>1,923,109.18</u>	<u>6,141,895.32</u>	<u>4,894,800.82</u>	<u>3,170,203.68</u>
		<u>49,133,492.81</u>	<u>82,980,253.34</u>	<u>88,240,595.72</u>	<u>43,873,150.43</u>

3

11.

	<u>2007. 12. 31</u>	<u>2006. 12. 31</u>
—	40,000.00	-
	347,700.00	3,345,654.00
	-	-
	<u>387,700.00</u>	<u>3,345,654.00</u>
2007	2,957,954.00	88.41%

12.

1

	<u>2007. 01. 01.</u>			<u>2007. 12. 31</u>
—	120,356,351.94	1,617,167.30	370,000.00	121,603,519.24
	3,729,000.00	-	-	3,729,000.00
	800,000.00	-	-	800,000.00
	12,000,000.00	-	-	12,000,000.00
	15,000,000.00	-	-	15,000,000.00
	10,000,000.00	-	-	10,000,000.00
	8,000,000.00	-	-	8,000,000.00
	8,000,000.00	-	-	8,000,000.00
	7,000,000.00	-	-	7,000,000.00
	2,200,000.00	-	-	2,200,000.00
HBV	400,000.00	-	-	400,000.00
	100,000.00	-	-	100,000.00
	8,000,000.00	-	-	8,000,000.00
	6,550,117.02	2,313,659.73	-	8,863,776.75
	10,700,000.00	-	-	10,700,000.00
	3,800,000.00	-	-	3,800,000.00
	3,000,000.00	-	-	3,000,000.00
	2,800,000.00	-	-	2,800,000.00
130/0.4	4,000,000.00	-	-	4,000,000.00
	13,111,495.00	998,505.00	-	14,110,000.00
	-	<u>92,370.00</u>	-	<u>92,370.00</u>
	<u>239,546,963.96</u>	<u>5,021,702.03</u>	<u>370,000.00</u>	<u>244,198,665.99</u>

2		<u>2007. 01. 01</u>			<u>2007. 12. 31</u>
		9, 702, 585. 97	2, 326, 185. 32	114, 932. 65	11, 913, 838. 64
		2, 175, 250. 00	372, 900. 00	-	2, 548, 150. 00
		293, 333. 48	80, 000. 04	-	373, 333. 52
		5, 288, 695. 84	-	-	5, 288, 695. 84
		12, 500, 000. 00	1, 500, 000. 00	-	14, 000, 000. 00
		4, 234, 751. 40	344, 680. 80	-	4, 579, 432. 20
		2, 489, 077. 80	-	-	2, 489, 077. 80
		2, 489, 086. 45	-	-	2, 489, 086. 45
		5, 716, 634. 67	699, 996. 00	-	6, 416, 630. 67
		1, 319, 999. 35	220, 000. 20	-	1, 539, 999. 55
HBV		239, 999. 35	-	-	239, 999. 35
		60, 000. 04	10, 000. 08	-	70, 000. 12
		4, 800, 000. 16	1, 600, 000. 08	-	6, 400, 000. 24
		2, 885, 694. 82	1, 157, 443. 50	-	4, 043, 138. 32
		3, 712, 916. 78	1, 643, 333. 26	-	5, 356, 250. 04
		31, 666. 67	380, 000. 00	-	411, 666. 67
		625, 000. 00	300, 000. 00	-	925, 000. 00
		840, 000. 00	560, 000. 00	-	1, 400, 000. 00
	130/0. 4	533, 333. 33	800, 000. 08	-	1, 333, 333. 41
		5, 273, 995. 29	1, 212, 632. 90	-	6, 486, 628. 19
		-	5, 433. 53	-	5, 433. 53
		<u>65, 212, 021. 40</u>	<u>13, 212, 605. 79</u>	<u>114, 932. 65</u>	<u>78, 309, 694. 54</u>
3		<u>2007. 01. 01</u>			<u>2007. 12. 31</u>
		6, 711, 304. 16	-	-	6, 711, 304. 16
		5, 133, 334. 32	-	-	5, 133, 334. 32
		5, 510, 922. 20	-	-	5, 510, 922. 20
		5, 510, 913. 55	-	-	5, 510, 913. 55
HBV		<u>160, 000. 65</u>	=	=	<u>160, 000. 65</u>
		<u>23, 026, 474. 88</u>	=	=	<u>23, 026, 474. 88</u>

4	<u>2007. 01. 01</u>	<u>2007. 12. 31</u>	<u>( )</u>
	110,653,765.97	109,689,680.60	2,75-47
	1,553,750.00	1,180,850.00	3.17
	506,666.52	426,666.48	5.33
	-	-	0.67
	2,500,000.00	1,000,000.00	0.67
	631,914.28	287,233.48	0.83
	-	-	0.83
	-	-	0.83
	1,283,365.33	583,369.33	0.83
	880,000.65	660,000.45	3
HBV	-	-	3
	39,999.96	29,999.88	3
	3,199,999.84	1,599,999.76	1
	3,664,422.20	4,820,638.43	0.83 10
	6,987,083.22	5,343,749.96	0.83 4.83
	3,768,333.33	3,388,333.33	8.92
	2,375,000.00	2,075,000.00	6.92
	1,960,000.00	1,400,000.00	2.5
130/0.4	3,466,666.67	2,666,666.59	3.33
	7,837,499.71	7,623,371.81	0.42-5
	-	86,936.47	4.58
	<u>151,308,467.68</u>	<u>142,862,496.57</u>	

13.

<u>2007. 01. 01</u>			<u>2007. 12. 31</u>	
-	34,455,515.87	34,455,515.87	-	34,455,515.87
<u>1,755,402.87</u>	<u>19,003,093.76</u>	-	<u>20,758,496.63</u>	-
<u>1,755,402.87</u>	<u>53,458,609.63</u>	<u>34,455,515.87</u>	<u>20,758,496.63</u>	<u>34,455,515.87</u>

14.

		<u>2007. 01. 01</u>		<u>2007. 12. 31</u>
	701, 404. 37	701, 404. 37	-	701, 404. 37
	812, 728. 98	<u>812, 728. 98</u>	-	<u>812, 728. 98</u>
		1, 514, 133. 35	-	1, 514, 133. 35
		<u>- 701, 404. 37</u>	-	<u>- 701, 404. 37</u>
		<u>812, 728. 98</u>	-	<u>812, 728. 98</u>

	116, 000, 000. 00	115, 298, 595. 63	701, 404. 37
	47, 000, 000. 00	46, 187, 271. 02	<u>812, 728. 98</u>
			<u>1, 514, 133. 35</u>

15.

		<u>2007. 01. 01</u>			<u>2007. 12. 31</u>	
8, 003, 009. 01	1, 237, 801. 71	178, 935. 00	1, 044, 944. 70	7, 631, 217. 00	371, 792. 01	3
502, 000. 00	176, 806. 18	-	69, 745. 44	394, 939. 26	107, 060. 74	0. 17 5
<u>1, 651, 790. 80</u>	<u>546, 086. 49</u>	<u>281, 040. 60</u>	<u>392, 722. 49</u>	<u>1, 217, 386. 20</u>	<u>434, 404. 60</u>	1. 17
	<u>1, 960, 694. 38</u>	<u>459, 975. 60</u>	<u>1, 507, 412. 63</u>	<u>9, 243, 542. 46</u>	<u>913, 257. 35</u>	

16.

	<u>2007. 12. 31</u>		<u>2006. 12. 31</u>	
	9, 567, 136. 39	56, 314, 159. 34	11, 016, 752. 91	64, 667, 216. 67
	2, 262, 535. 09	15, 082, 759. 53	1, 980, 952. 99	12, 785, 141. 33
	2, 039, 052. 45	11, 354, 070. 30	2, 330, 047. 70	11, 435, 485. 83
	419, 914. 98	2, 799, 433. 20	944, 212. 86	6, 294, 752. 40
	-	-	809, 010. 00	5, 393, 400. 00
	<u>14, 288, 638. 91</u>	<u>85, 550, 422. 37</u>	<u>17, 080, 976. 46</u>	<u>100, 575, 996. 23</u>

17.

<u>2007. 01. 01</u>	<u>2007. 12. 31</u>
275, 712, 288. 91	29, 132, 661. 09
22, 324, 543. 86	5, 522, 226. 69
120, 698, 623. 95	1, 175, 000. 00
11, 435, 485. 83	16, 172, 247. 96
23, 026, 474. 88	-
<u>701, 404. 37</u>	<u>-</u>
<u>453, 898, 821. 80</u>	<u>52, 002, 135. 74</u>

18.

	<u>2007. 01. 01</u>		<u>2007. 12. 31</u>
1.	49, 362, 724. 99	-	1, 008, 385. 49
2.	<u>9, 375, 855. 51</u>	-	<u>9, 375, 855. 51</u>
	<u>58, 738, 580. 50</u>	-	<u>10, 384, 241. 00</u>

8

19.

	<u>2007. 12. 31</u>	<u>2006. 12. 31</u>
	170, 000, 000. 00	170, 000, 000. 00
	30, 000, 000. 00	40, 500, 000. 00
	<u>104, 000, 000. 00</u>	<u>108, 000, 000. 00</u>
	<u>304, 000, 000. 00</u>	<u>318, 500, 000. 00</u>

A. 2007 12 31

B.

	<u>3, 000</u>	<u>2007 6 8</u>	<u>2008 6 8</u>	<u>8</u>
--	---------------	-----------------	-----------------	----------

C.

3,000	2007	11	19	2008
			11	19
3,000	2007	4	28	2008
			4	27
4,000	2007	9	26	2008
			9	25
400	2007	12	25	2008
			12	24

20.

<u>2007. 12. 31</u>	<u>2006. 12. 31</u>
203,080,829.62	171,232,235.33

A.

B. 2007 12 31 5% 5%

21.

1

	<u>2007. 12. 31</u>	%	<u>2006. 12. 31</u>	%
	307,275,038.67	78.82	385,029,429.46	84.13
	20,371,981.79	5.22	15,300,911.84	3.34
	6,295,293.45	1.61	37,909,175.64	8.28
	<u>55,969,867.01</u>	<u>14.35</u>	<u>19,475,288.89</u>	<u>4.25</u>
	<u>389,912,180.92</u>	<u>100.00</u>	<u>457,714,805.83</u>	<u>100.00</u>

2 2007 12 31 5% 5%

22.

1

	<u>2007. 12. 31</u>	%	<u>2006. 12. 31</u>	%
	63,081,075.59	91.64	27,347,194.14	85.17
	2,134,591.23	3.10	1,209,085.21	3.77
	289,278.90	0.42	563,534.26	1.76
	<u>3,333,539.55</u>	<u>4.84</u>	<u>2,985,146.74</u>	<u>9.30</u>
	<u>68,838,485.27</u>	<u>100.00</u>	<u>32,104,960.35</u>	<u>100.00</u>

2	2007	12	31	5%	5%
3		1			
4	2007			36, 733, 524. 92	114. 42%

23.

	<u>2007. 01. 01</u>			<u>2007. 12. 31</u>
	5, 611, 731. 51	270, 284, 786. 68	270, 504, 734. 68	5, 391, 783. 51
	27, 930, 442. 03	-17, 696, 521. 13	10, 233, 920. 90	-
	23, 220, 296. 46	31, 927, 222. 97	54, 039, 685. 28	1, 107, 834. 15
1	7, 083, 765. 21	4, 904, 332. 17	11, 843, 853. 01	144, 244. 37
2	14, 621, 703. 27	23, 575, 726. 07	37, 344, 317. 18	853, 112. 16
3	-	-	-	-
4	909, 860. 82	2, 010, 576. 43	2, 890, 203. 72	30, 233. 53
5	158, 939. 25	901, 602. 84	1, 028, 768. 02	31, 774. 07
6	446, 027. 91	534, 985. 46	932, 543. 35	48, 470. 02
	1, 111, 712. 24	22, 810, 826. 37	23, 579, 869. 61	342, 669. 00
	13, 936, 431. 56	9, 326, 635. 06	9, 163, 444. 78	14, 099, 621. 84
	-	-	-	-
	5, 393, 400. 00	-	5, 393, 400. 00	-
	9, 632, 477. 01	-	8, 284, 482. 61	1, 347, 994. 40
	-	-	-	-
	<u>86, 836, 490. 81</u>	<u>316, 652, 949. 95</u>	<u>381, 199, 537. 86</u>	<u>22, 289, 902. 90</u>

24.

	<u>2007. 12. 31</u>	<u>2006. 12. 31</u>
	48, 099, 336. 29	38, 163, 389. 83
	19, 739, 390. 56	1, 955, 929. 83
	3, 141, 690. 48	2, 420, 327. 35
	42, 275, 271. 49	16, 468, 609. 75
	2, 442, 036. 39	1, 647, 138. 38
	1, 394, 345. 17	492, 087. 79
	375, 406. 59	169, 362. 33
	-	2, 770. 00
	39, 012. 12	38, 732. 25
	<u>2, 804, 516. 39</u>	<u>2, 600, 853. 01</u>
	<u>120, 311, 005. 48</u>	<u>63, 959, 200. 52</u>



2007 56,351,804.96 88.11%

25.

	<u>2007.12.31</u>	<u>2006.12.31</u>
_____	367,789.60	-
	<u>93,322.24</u>	=
	<u>461,111.84</u>	=

26.

	<u>2007.12.31</u>	%	<u>2006.12.31</u>	%
_____	42,272,736.09	30.04	31,682,845.59	26.95
	18,167,011.35	12.91	31,135,557.48	26.48
	27,616,063.72	19.63	29,330,763.52	24.95
	<u>52,661,469.78</u>	<u>37.42</u>	<u>25,414,175.77</u>	<u>21.62</u>
	<u>140,717,280.94</u>	<u>100.00</u>	<u>117,563,342.36</u>	<u>100.00</u>

2 2007 12 31 5% 5%

_____	_____
	15,852,446.73

27.

			<u>2007.12.31</u>	<u>2006.12.31</u>
_____	_____	_____	_____	_____
	2006-5-31	16,000,000.00	16,000,000.00	16,000,000.00
	2009-5-30			
	2004 2008	<u>8,000,000.00</u>	-	<u>7,000,000.00</u>
		<u>24,000,000.00</u>	<u>16,000,000.00</u>	<u>23,000,000.00</u>

28.

	<u>2007.01.01</u>		<u>2007.12.31</u>
_____		27,000,000.00	27,000,000.00

29.

	<u>2007. 12. 31</u>		<u>2006. 12. 31</u>	
	1, 894, 533. 28	12, 630, 221. 87	-	-

30. ( )

			%						%
1.	-	-	-	-	-	-	-	-	-
2.	-	-	-	-	-	-	-	-	-
3.	19, 573. 23	44. 38	-	-	-	-	-	19, 573. 23	44. 38
	19, 573. 23	44. 38	-	-	-	-	-	19, 573. 23	44. 38
	-	-	-	-	-	-	-	-	-
4.	-	-	-	-	-	-	-	-	-
	-	-	-	-	-	-	-	-	-
	-	-	-	-	-	-	-	-	-
	19, 573. 23	44. 38	-	-	-	-	-	19, 573. 23	44. 38
1.	24, 534. 34	55. 62	-	-	-	-	-	24, 534. 34	55. 62
2.	-	-	-	-	-	-	-	-	-
3.	-	-	-	-	-	-	-	-	-
4.	-	-	-	-	-	-	-	-	-
	<u>24, 534. 34</u>	<u>55. 62</u>	=	=	=	=	=	<u>24, 534. 34</u>	<u>55. 62</u>
	<u>44, 107. 57</u>	<u>100. 00</u>	=	=	=	=	=	<u>44, 107. 57</u>	<u>100. 00</u>
2007	12	31	5%						
			(%)						
				48. 89	215, 653, 887			192, 850, 367	

31.

<u>2007. 01. 01</u>	-	-	<u>2007. 12. 31</u>
567, 123, 115. 00			567, 123, 115. 00
<u>41, 657, 592. 64</u>	661, 956. 66	-	<u>42, 319, 549. 30</u>
<u>608, 780, 707. 64</u>	<u>661, 956. 66</u>	-	<u>609, 442, 664. 30</u>

32.

<u>2007. 01. 01</u>	-	-	<u>2007. 12. 31</u>
130, 553, 974. 19	35, 566, 444. 57	-	166, 120, 418. 76

33.

<u>2007</u>	<u>2006</u>
526, 986, 635. 89	462, 464, 509. 21
122, 405, 370. 71	110, 223, 395. 13
649, 392, 006. 60	572, 687, 904. 34
-	-
437, 580, 763. 41	164, 742, 346. 24
35, 566, 444. 57	8, 644, 620. 01
-	-
70, 572, 109. 88	79, 393, 623. 97
-	-
<u>980, 834, 215. 56</u>	<u>649, 392, 006. 60</u>

1

2

3 2007

10%

B

2007

2

34.

	<u>2007. 12. 31</u>	<u>2006. 12. 31</u>
	23, 696, 839. 31	21, 828, 359. 23
	14, 392, 834. 59	13, 598, 362. 74
	60, 620, 789. 40	52, 687, 610. 48
	4, 381, 225. 34	4, 347, 159. 97
	2, 117, 496. 48	27, 609, 009. 23
	3, 836, 079. 53	3, 959, 549. 76
	1, 703, 738. 81	1, 171, 349. 42
	56, 430, 671. 51	47, 597, 267. 49
	<u>35, 049. 37</u>	<u>1, 057, 837. 24</u>
	<u>167, 214, 724. 34</u>	<u>173, 856, 505. 56</u>

35

1

A.

<u>—</u>	<u>2007</u>	<u>2006</u>
	4, 491, 477, 548. 59	4, 065, 827, 253. 79
	<u>65, 138, 832. 53</u>	<u>67, 518, 800. 22</u>
	<u>4, 556, 616, 381. 12</u>	<u>4, 133, 346, 054. 01</u>

B.

<u>—</u>	<u>2007</u>		<u>2006</u>	
	<u>—</u>	<u>—</u>	<u>—</u>	<u>—</u>
	4, 453, 133, 355. 59	3, 117, 151, 736. 25	4, 027, 518, 714. 55	2, 887, 470, 939. 84
	<u>38, 344, 193. 00</u>	<u>27, 182, 192. 32</u>	<u>38, 308, 539. 24</u>	<u>29, 181, 786. 52</u>
	<u>4, 491, 477, 548. 59</u>	<u>3, 144, 333, 928. 57</u>	<u>4, 065, 827, 253. 79</u>	<u>2, 916, 652, 726. 36</u>

214, 173, 620. 66

4. 70%

2

A.

<u>—</u>	<u>2007</u>	<u>2006</u>
	654, 772, 640. 84	554, 792, 373. 29
	<u>42, 305, 166. 13</u>	<u>55, 620, 263. 42</u>
	<u>697, 077, 806. 97</u>	<u>610, 412, 636. 71</u>

B.

—	<u>2007</u>		<u>2006</u>	
	—	—	—	—
	654, 772, 640. 84	236, 014, 846. 70	554, 792, 373. 29	234, 611, 290. 24

643, 530, 634. 15

92. 32%

36.

—		<u>2007</u>	<u>2006</u>
	3% 5%	1, 960, 685. 49	915, 256. 41
	5% 7%	16, 759, 020. 56	15, 204, 402. 51
	3% 4%	7, 945, 529. 17	7, 469, 572. 61
		<u>1, 429, 410. 77</u>	<u>909, 683. 99</u>
		<u>28, 094, 645. 99</u>	<u>24, 498, 915. 52</u>

37.

—		<u>2007</u>	<u>2006</u>
		29, 132, 661. 09	113, 334, 862. 22
		5, 522, 226. 69	4, 782, 010. 25
		1, 175, 000. 00	5, 514, 809. 64
		16, 172, 247. 96	1, 170, 085. 83
		—	<u>1, 313, 150. 56</u>
		<u>52, 002, 135. 74</u>	<u>126, 114, 918. 50</u>

2007

74, 112, 782. 76

58. 77%

38.  
1  
A

	<u>2007</u>	<u>2006</u>
	-	- 3,000,591.63
	557,353.63	149,450.07
	415,455.09	218,950.27
	- 670,132.95	- 69,176.38
	-	2,312,860.67
	-	200,000.00
	1,560.00	1,560.00
	1.00	-
	-	- 602,840.05
	-	5,834,935.14
	-	952,465.15
	-	- 14,990.84
	-	<u>8,527.49</u>
	<u>304,236.77</u>	<u>5,991,149.89</u>
2007	5,686,913.12	94.92%

B

	<u>2007</u>	<u>2006</u>
	304,235.77	- 186,947.00
	302,675.77	- 2,701,367.67
	1,560.00	2,514,420.67
	1.00	6,169,569.40
	-	<u>8,527.49</u>
	<u>304,236.77</u>	<u>5,991,149.89</u>

2  
A

	<u>2007</u>	<u>2006</u>
	159,357.14	19,039.17
	-	1,570,087.93
	182,197.16	175,614.39
	415,455.09	218,950.27
	-670,132.95	-69,176.38
	-	2,312,860.67
	-	200,000.00
	1.00	-
	-	-602,840.05
	-	5,834,935.14
	-	<u>952,465.15</u>
	<u>86,877.44</u>	<u>10,611,936.29</u>

B

	<u>2007</u>	<u>2006</u>
	86,876.44	4,427,376.05
	86,876.44	1,914,515.38
	-	2,512,860.67
	<u>1.00</u>	<u>6,184,560.24</u>
	<u>86,877.44</u>	<u>10,611,936.29</u>

39.

	<u>2007</u>	<u>2006</u>
	196,907,661.33	17,976,120.75
	11,406,704.00	15,174,759.90
	764,000.00	
	<u>3,495,547.90</u>	<u>996,103.20</u>
	<u>212,573,913.23</u>	<u>34,146,983.85</u>

CBD

2002

2007 11

25

2007 10 23

2007

26

33, 263. 12

16, 821. 13

1

		<u>2007</u>	<u>2006</u>	
		500, 000. 00	-	
		500, 000. 00	-	
		106, 500. 00	-	
07	-	100, 000. 00	-	
		11, 200, 204. 00	12, 948, 993. 00	
		-	800, 000. 00	
		-	50, 000. 00	
		-	500, 000. 00	
		-	50, 000. 00	
		-	40, 000. 00	
		-	356, 700. 00	
		-	150, 000. 00	
		-	124, 000. 00	
		-	155, 066. 90	
		<u>11, 406, 704. 00</u>	<u>15, 174, 759. 90</u>	
		<u>11, 906, 704. 00</u>	<u>15, 174, 759. 90</u>	



2

	<u>2007</u>	<u>2006</u>	<u>2007. 12. 31</u>	<u>2006. 12. 31</u>
	-	-	300,000.00	300,000.00
	-	-	280,000.00	280,000.00
	-	-	3,435,000.00	3,435,000.00
	-	-	631,593.37	631,593.37
	-	-	550,000.00	550,000.00
	-	-	500,000.00	-
	-	-	5,696,593.37	5,196,593.37
	-	500,000.00	-	-
	-	800,000.00	-	-
	-	50,000.00	-	-
07	100,000.00	-	-	-
	11,200,204.00	12,948,993.00	-	-
	-	50,000.00	-	-
	-	40,000.00	-	-
	106,500.00	-	-	-
	-	356,700.00	-	-
	-	150,000.00	-	-
	-	124,000.00	-	-
	-	155,066.90	-	-
	<u>11,406,704.00</u>	<u>15,174,759.90</u>	-	-
	<u>11,406,704.00</u>	<u>15,174,759.90</u>	<u>5,696,593.37</u>	<u>5,196,593.37</u>

a)

300,000.00 , 2007 12 31 , 2004 300,000.00 ,

b)

, 2002 " " " " , 2007

	12	31			280,000.00	
c)				[ 2003] 884		, 2003
	- 2006			3,435,000.00		
			2007	12	31	
	3,435,000.00					
d)		2007	12	31		631,593.37
e)		2007	12	31		550,000.00
f)				[ 2007] 42		2006
	2006					
	50					
		2007	12	31		500,000.00
a)					2007	
				2007	100,000.00	
				2007		
b)	2007			100,000.00		
			2000	6	28	
			[ 2003] 69			2003 44
			11,200,204.00			2007
						11,200,204.00
c)	2007	10				106,500.00
	2007				106,500.00	
40.						
				<u>2007</u>		<u>2006</u>
				1,299,226.54		1,507,390.82
				27,000,000.00		-3,550,000.00
				255,299.46		1,413,711.40
				<u>3,099,915.62</u>		<u>2,681,237.79</u>
				<u>31,654,441.62</u>		<u>2,052,340.01</u>

41.

	<u>2007</u>	<u>2006</u>
	112,390,315.10	67,725,163.26
	<u>4,686,870.83</u>	<u>-3,821,860.45</u>
	<u>117,077,185.93</u>	<u>63,903,302.81</u>
	<u>2007</u>	<u>2006</u>
	574,684,384.48	243,286,052.33
	<u>189,645,846.88</u>	<u>80,284,397.27</u>
	<u>-100,939,749.87</u>	<u>-39,162,586.40</u>
	=	=
	<u>-28,804,151.48</u>	<u>-9,800,207.33</u>
	<u>57,037,609.15</u>	<u>19,797,460.33</u>
	=	=
	<u>-8,033,608.55</u>	=
	<u>8,171,239.80</u>	<u>12,784,238.94</u>
	=	=
	<u>117,077,185.93</u>	<u>63,903,302.81</u>

42.

	<u>2007</u>	<u>2006</u>
a	437, 580, 763. 41	164, 742, 346. 24
b	441, 075, 700. 00	441, 075, 700. 00
a/b	0. 99	0. 37

43.

	<u>2007</u>	<u>2006</u>
11, 906, 704. 00	11, 906, 704. 00	15, 174, 759. 90
	-	86, 709, 291. 70
	-	29, 518, 157. 47
	-	9, 202, 384. 97
	-	4, 531, 126. 96

44.

	<u>2007</u>	<u>2006</u>
635, 850, 904. 71	110, 597, 210. 95	77, 825, 748. 15
	91, 993, 124. 19	81, 313, 114. 06
	91, 993, 124. 19	67, 334, 750. 01
	47, 094, 110. 43	31, 730, 143. 01
	41, 027, 041. 12	35, 028, 560. 27
	32, 135, 116. 74	27, 332, 706. 50
	27, 224, 719. 18	35, 735, 069. 58
	27, 034, 824. 90	-
	22, 737, 822. 27	15, 270, 858. 73
	16, 956, 852. 20	8, 346, 043. 17
	15, 275, 429. 56	22, 225, 611. 66
	13, 795, 525. 74	7, 777, 843. 11
	8, 570, 518. 61	9, 835, 826. 12
	6, 380, 895. 28	3, 602, 506. 17
	6, 016, 862. 87	5, 911, 576. 41
	1, 571, 054. 73	6, 559, 751. 85
	-	19, 300, 000. 00

45.

	13, 004, 229. 82		
	<u>2007</u>	<u>2006</u>	
_____	13, 004, 229. 82	7, 664, 270. 66	

46.

	437, 719. 54		
	<u>2007</u>	<u>2006</u>	
_____	437, 719. 54	505, 899. 17	

47.

	<u>2007</u>	<u>2006</u>		
_____	_____	_____	_____	_____

1.

	<b>457, 607, 198. 55</b>	<b>355, 664, 445. 67</b>	<b>179, 382, 749. 52</b>	<b>86, 446, 200. 13</b>
	52, 002, 135. 74	31, 428, 292. 57	126, 114, 918. 50	90, 170, 946. 03
	92, 500, 488. 49	36, 129, 708. 97	89, 071, 681. 27	39, 301, 879. 01
	13, 212, 605. 79	7, 229, 108. 15	10, 817, 095. 83	6, 869, 592. 57
	1, 507, 412. 63	-	4, 869, 978. 82	-
	-195, 453, 367. 44	-187, 380, 150. 14	-16, 468, 729. 93	-6, 632, 483. 22
" "				
" "				
" "				
" "	11, 433, 776. 25	7, 242, 107. 25	19, 266, 523. 05	9, 533, 458. 62
" "	-304, 236. 77	-86, 877. 44	-5, 991, 149. 89	-10, 611, 936. 29
" "	2, 792, 337. 55	2, 459, 639. 59	-3, 821, 860. 45	-2, 524, 439. 46
" "	1, 894, 533. 28	1, 894, 533. 28	-	-
" "	-64, 057, 655. 13	-10, 094, 768. 44	-16, 847, 617. 65	-17, 609, 038. 83
" "	-107, 753, 053. 68	-474, 978, 870. 53	-203, 844, 112. 62	-49, 092, 383. 26
" "	-29, 889, 187. 99	-17, 905, 738. 65	114, 405, 430. 49	-21, 562, 929. 20
	-34, 824. 90	26, 161, 775. 64	6, 668, 157. 47	-12, 740, 801. 83
	<b>235, 458, 162. 37</b>	<b>-222, 236, 794. 08</b>	<b>303, 623, 064. 41</b>	<b>111, 548, 064. 27</b>

2

-	-	-	-
-	-	-	-
-	-	-	-

3

550,311,715.76	7,899,493.29	391,246,690.24	203,711,618.37
391,246,690.24	203,711,618.37	577,827,553.49	326,500,251.14
-	-	-	-
-	-	-	-
<b>159,065,025.52 - 195,812,125.08 - 186,580,863.25 - 122,788,632.77</b>			

48.

2007

	_____	_____	_____	_____
	2,228,147,685.54	2,379,457,096.55	-50,988,400.97	4,556,616,381.12
	2,177,159,284.57	2,379,457,096.55	-	-
	50,988,400.97	-	-	-
	558,926,498.94	101,767,749.89	-	660,694,248.83
/( )	452,202,960.20	10,461,042.37	-68,899,089.70	393,764,912.87
	2,984,795,171.83	775,778,405.60	-87,110,202.05	3,673,463,375.38
	653,763,793.22	667,475,295.76	-12,463,436.56	1,308,775,652.42

2006

	_____	_____	_____	_____
	2,058,126,920.28	2,119,739,133.24	-44,519,999.51	4,133,346,054.01
	2,013,606,920.77	2,119,739,133.24	-	-
	44,519,999.51	-	-	-
	460,062,302.77	76,037,220.03	-	536,099,522.80
/( )	203,797,717.60	-1,752,036.51	9,145,727.40	211,191,408.49
	2,551,359,172.48	743,659,368.61	-13,567,736.53	3,281,450,804.56
	646,668,583.74	644,691,063.36	-13,567,736.53	1,277,791,910.57

49.

	<u>2006</u>			<u>2007. 1. 1</u>
	451, 955, 483. 71	-	16, 232, 719. 27	468, 188, 202. 98
	-	-	-	-
	155, 890, 426. 93	-	786, 285. 00	156, 676, 711. 93
	508, 804, 818. 34	-	-1, 616, 061. 79	507, 188, 756. 55
	164, 983, 649. 44	1, 533, 142. 34	2, 112, 632. 60	168, 629, 424. 38
	-	-	-	-
	-	-	-	-
	69, 932, 289. 88	-	109, 706. 30	70, 041, 996. 18
	466, 541, 236. 43	-1, 755, 402. 87	5, 242, 876. 56	470, 028, 710. 12
	1, 533, 142. 34	-1, 533, 142. 34	-	-
	-	-	-	-
	-	-	-	-
	<b>1, 819, 641, 047. 07</b>	<b>-1, 755, 402. 87</b>	22, 868, 157. 94	<b>1, 840, 753, 802. 14</b>
	-	-	-	-
	-	-	-	-
	-	-	-	-
	-	-	-	-
	103, 355, 917. 87	-3, 901, 137. 81	-15, 616, 230. 59	83, 838, 549. 47
		107, 095, 536. 87	-	107, 095, 536. 87
	1, 222, 126, 342. 57	-198, 242, 602. 31	481, 758. 64	1, 024, 365, 498. 90
	49, 133, 492. 81	-	-	49, 133, 492. 81
	3, 345, 654. 00	-	-	3, 345, 654. 00
	-	-	-	-
	-	-	-	-
	-	-	-	-
	52, 221, 207. 76	98, 984, 565. 15	102, 694. 77	151, 308, 467. 68
	-	1, 755, 402. 87	-	1, 755, 402. 87
	-	812, 728. 98	-	812, 728. 98
	9, 496, 165. 04	-7, 837, 499. 71	302, 029. 05	1, 960, 694. 38
	-	16, 934, 864. 90	146, 111. 56	17, 080, 976. 46
	-	-	-	-

<u>2006</u>			<u>2007. 1. 1</u>
1, 439, 678, 780. 05	15, 601, 858. 94	-14, 583, 636. 57	1, 440, 697, 002. 42
3, 259, 319, 827. 12	13, 846, 456. 07	8, 284, 521. 37	3, 281, 450, 804. 56
<u>2006</u>			<u>2007. 1. 1</u>
318, 500, 000. 00	-	-	318, 500, 000. 00
-	-	-	-
171, 232, 235. 33	-	-	171, 232, 235. 33
452, 945, 074. 20	-	4, 769, 731. 63	457, 714, 805. 83
31, 429, 340. 94	-	675, 619. 41	32, 104, 960. 35
5, 583, 318. 77	81, 016, 062. 24	237, 109. 80	86, 836, 490. 81
27, 799, 828. 97	-27, 799, 828. 97	-	-
62, 123, 885. 22	2, 596, 264. 98	-760, 949. 68	63, 959, 200. 52
3, 055, 495. 45	-3, 055, 495. 45	-	-
-	-	-	-
-	-	-	-
160, 702, 639. 06	-46, 502, 306. 91	3, 363, 010. 21	117, 563, 342. 36
861, 599. 84	-861, 599. 84	-	-
-	-	-	-
-	-	-	-
1, 234, 233, 417. 78	5, 393, 096. 05	8, 284, 521. 37	1, 247, 911, 035. 20
-	-	-	-
-	-	-	-
23, 000, 000. 00	-	-	23, 000, 000. 00
5, 196, 593. 37	-5, 196, 593. 37	-	-
-	-	-	-
-	-	-	-
1, 684, 282. 00	5, 196, 593. 37	-	6, 880, 875. 37
29, 880, 875. 37		-	29, 880, 875. 37
1, 264, 114, 293. 15	5, 393, 096. 05	8, 284, 521. 37	1, 277, 791, 910. 57
179, 661, 992. 93	-179, 661, 992. 93	-	-
-	-	-	-
441, 075, 700. 00	-	-	441, 075, 700. 00



	<u>2006</u>			<u>2007. 1. 1</u>	
	608, 780, 707. 64	-	-	608, 780, 707. 64	
	-	-	-	-	
	238, 700, 497. 51	-108, 146, 523. 32	-	130, 553, 974. 19	
	526, 986, 635. 89	122, 405, 370. 71	-	649, 392, 006. 60	
	-	-	-	-	
	<b>1, 815, 543, 541. 04</b>	<b>14, 258, 847. 39</b>	-	<b>1, 829, 802, 388. 43</b>	
	-	173, 856, 505. 56	-	173, 856, 505. 56	
	<b>1, 995, 205, 533. 97</b>	<b>8, 453, 360. 02</b>	-	<b>2, 003, 658, 893. 99</b>	
	<b>3, 259, 319, 827. 12</b>	<b>13, 846, 456. 07</b>	8, 284, 521. 37	<b>3, 281, 450, 804. 56</b>	

1

1996 2  
38

---

"

33 ---

" 2007  
2006

2

A.	1, 533, 142. 34
B.	1, 755, 402. 87
C.	3, 901, 137. 81
D.	107, 095, 536. 87
E.	198, 242, 602. 31
F.	98, 984, 565. 15
G.	7, 837, 499. 71
H.	16, 934, 864. 90
I.	81, 016, 062. 24
J.	861, 599. 84
K.	2, 596, 264. 98
L.	3, 055, 495. 45
M.	46, 502, 306. 91
N.	5, 196, 593. 37

1

---

Q 108, 146, 523. 32

1.  
1

A

_____	_____	_____	_____	_____	_____	_____
			_____%	_____%		
			48.89	48.89	232,000.00	10110522-3

B

2

_____	_____	_____
		63365006-2
		10120880-4
		10175561-3
		10193963-1
		71390256-5
		73230553-9
		72261785-4
		10305581-3
		73167501-X
		72653957-4
		74936205-4
		74880547-4
		21764158-9
		75983883-7
		74332836-5
		10165558-3

2

1

		<u>2007</u>		<u>2006</u>	
		9,903,404.10	0.22	4,060,651.63	0.10
		666,222.22	0.60	9,767,735.86	25.99
		1,043,781.10	0.94	76,360.34	0.20
		2,264,408.00	2.05	377,470.08	1.00
		2,000.00	0.00	-	-
		35,453,765.17	0.80	32,684,403.85	0.81
		6,953,445.55	0.16	23,564,489.79	0.59
		533,590.00	0.48	-	-
		48,490,174.45	1.09	-	-
		52,649.56	0.05	334,529.92	0.89
		2,571,918.57	0.06	1,188,176.95	0.03
		707,775.38	0.02	905,423.70	0.02
		-	0.00	4,478,818.53	0.11
		-	-	5,875,007.90	0.15

2

	<u>2007</u>		<u>2006</u>	
	-	-	2,992,505.70	0.10
	14,451,696.25	0.46	17,679,277.62	0.61
	48,639.11	0.00	5,282,864.74	0.18
	6,288,733.61	0.20	42,559,022.30	1.48
	565,547.86	0.02	7,383,799.44	0.26
	526,206.91	0.02	20,514.35	0.00
	3,676,678.89	0.12	6,162,159.25	0.21
	58,514,522.20	1.89	-	-
	12,649.24	0.00	-	-
	-	-	1,017,657.73	0.04
	41.18	0.00	258,166.06	0.01

3

2007	12	31	2007	12	31
	3,000.00			3,000.00	
	400.00			400.00	
	3,000.00			3,000.00	
	4,000.00			4,000.00	
	17,127.01			3,024.00	
	27,527.01			13,424.00	

3.

	<u>2007. 12 31</u>		<u>2006. 12 31</u>	
	5, 601, 332. 51	0. 84	6, 438, 631. 22	0. 96
	33, 000. 00	0. 00	1, 966, 000. 00	0. 29
	502, 537. 70	0. 08	21, 341. 60	0. 00
	582, 669. 00	0. 09	55, 400. 00	0. 01
	1, 102, 847. 33	0. 16	754, 187. 30	0. 11
	10, 684, 461. 05	1. 60	16, 194, 618. 39	2. 41
	15, 517, 729. 52	2. 32	3, 270, 817. 58	0. 49
	69, 998. 97	0. 01	69, 998. 97	0. 01
	-	-	73, 980. 00	0. 01
	818, 486. 44	0. 12	408, 510. 30	0. 06
	2, 389, 772. 92	0. 36	2, 912, 385. 78	0. 43
	1, 248, 305. 97	0. 19	1, 248, 305. 97	0. 19
	1, 760, 151. 00	0. 26	2, 301, 388. 46	0. 26
	110, 551. 90	0. 02	70, 773. 50	0. 01
	17, 684. 00	0. 00	17, 684. 00	0. 01
	40, 869. 16	0. 01	40, 869. 16	0. 02
	5, 724, 283. 64	1. 60	1, 534, 500. 00	0. 83
	24, 297, 848. 00	6. 78	24, 297, 848. 00	13. 21
	-	-	37, 330, 510. 20	20. 29
	132, 178. 35	0. 09	1, 065, 559. 16	0. 65
	-	-	1, 301, 264. 00	0. 79
	78, 886. 30	0. 05	78, 886. 30	0. 05
	51, 886. 28	0. 01	51, 886. 28	0. 01
	1, 090, 096. 79	0. 28	1, 989, 991. 16	0. 44
	12, 234. 90	0. 00	103, 745. 05	0. 02
	72. 23	0. 00	71, 041. 66	0. 02
	-	-	1, 597, 134. 15	0. 35
	627, 994. 10	0. 16	6, 893, 028. 35	1. 52
	751, 848. 88	0. 19	216, 157. 88	0. 05
	66, 698. 38	0. 02	66, 698. 38	0. 01
	372, 602. 66	0. 10	280, 104. 12	0. 06
	5, 293, 744. 67	1. 36	-	-
	-	-	381, 900. 76	0. 08

	<u>2007. 12. 31</u>		<u>2006. 12. 31</u>	
	68,400.00	0.02	68,400.00	0.02
	14,900.00	0.00	8,367.30	0.00
	15,852,446.73	11.08	15,082,593.55	9.39
	28,344.00	0.04	305,784.30	0.97
	20,848.00	0.03	20,848.00	0.07
	3,042.10	0.00	3,042.10	0.01
	117,420.00	0.17	-	-

28

2700

2007 12 31

2007 12 31

A

4000

2008 1 21

2008 3 15

2008 413

4,000

2008 410

3,000

B

2007

0.185

2008 4 8

2007 12 31

1.

	2007		2006		2007		2006	
	19.91%	9.00%	21.73%	9.19%	0.99	0.37		
	12.58%	7.51%	13.73%	7.66%	0.63	0.31		

2007

	165,293,951.17
	7,992,076.72
	15,203,750.63
	-4,564.05
	-27,000,000.00
	2,291,722.63
	<u>-2,681,745.48</u>
	<u>161,095,191.62</u>

2

1

2006 1 1

2006 1 1

1, 727, 869, 655. 79

1.

-4, 968, 895. 33

-

-4, 968, 895. 33

2

-

3

-

4

-

5

-

6

-

7

-

-

-

8

-

9

-

10

-

11.

-

12

11, 845, 132. 61

13

205, 278, 411. 83

14.

8, 686, 628. 85

2006 1 1

1, 948, 710, 933. 75

A.

1

B.

38



				2006 12 31		
				<u>2007</u>	<u>2006</u>	
2006	12	31		1, 815, 543, 541. 04	1, 815, 543, 541. 04	-
1.				- 3, 088, 408. 83	662, 406. 10	- 3, 750, 814. 93
						-
				- 3, 088, 408. 83	662, 406. 10	- 3, 750, 814. 93
2.						-
3.						-
4.				- 5, 393, 400. 00	- 5, 393, 400. 00	-
5.						-
6.						-
7.						-
8.						-
9.						-
10.						-
11.						-
12.				15, 207, 000. 92	30, 847, 918. 59	- 15, 640, 917. 67
13.				173, 856, 505. 56	181, 485, 943. 48	- 7, 629, 437. 92
14. B	H					-
15.				7, 533, 655. 30		7, 533, 655. 30
2007	1	1		2, 003, 658, 893. 99	2, 023, 146, 409. 21	- 19, 487, 515. 22
	2007		2007	2006	"	
	"	2007		- 19, 487, 515. 22		
1					1	
				3, 750, 814. 93		
				15, 640, 917. 67	18	-
				7, 629, 437. 92		
				96, 086. 57	7, 533, 351. 35	

3		2006			
		4, 116, 608, 824. 21	4, 133, 346, 054. 01	16, 737, 229. 80	-
		2, 952, 647, 410. 92	2, 966, 524, 321. 06	13, 876, 910. 14	-
		24, 443, 107. 11	24, 498, 915. 52	55, 808. 41	-
		534, 241, 067. 37	536, 099, 522. 80	1, 858, 455. 43	
		241, 544, 369. 94	255, 641, 594. 48	2, 404, 669. 14	5, 393, 400. 00
		19, 417, 458. 60	19, 266, 523. 05	-150, 935. 55	-
		126, 825, 145. 42	126, 114, 918. 50	-710, 226. 92	-
	" -"	-	-	-	-
	" -"	3, 438, 173. 98	5, 991, 149. 89	672, 489. 41	1, 880, 486. 50
		-	-	-	-
	" -"	220, 928, 438. 83	211, 191, 408. 49	75, 038. 56	-3, 512, 913. 50
		34, 146, 983. 85	34, 146, 983. 85	-	-
		2, 017, 146. 55	2, 052, 340. 01	35, 193. 46	-
		-	-	-	-
	" -"	253, 058, 276. 13	243, 286, 052. 33	39, 845. 10	-3, 512, 913. 50
		67, 539, 206. 61	63, 903, 302. 81	39, 845. 10	-3, 675, 748. 90
		6, 299, 155. 40	-	-	-
	" -"	179, 219, 914. 12	179, 382, 749. 52	-	162, 835. 40
A.	5, 393, 400. 00		9	—	
B.	1, 880, 486. 50		1		
	1, 880, 486. 50				
C.	38				
			2006		-3, 675, 748. 90

---

(4) 2006	2006	
		<hr/>
2006		164, 893, 391. 43
1.		- 5, 393, 400. 00
2.		3, 361, 868. 31
3.		1, 880, 486. 50
4.		14, 640, 403. 28
2006		179, 382, 749. 52
		672, 428. 62
2006		180, 055, 178. 14
1		
2		
3		